



**2021**  
**RESEARCH**  
**HIGHLIGHTS**

[School of Social Welfare Research Office webpage](#)

#kussw



**KU**  
SCHOOL OF  
SOCIAL WELFARE  
The University of Kansas

# MESSAGE FROM THE DEAN



The 2020-2021 academic year continued to be a time of unprecedented circumstances and challenges as the COVID-19 pandemic persisted. However, in the KU School of Social Welfare, we continued to pursue our goal of conducting scholarship and research that impacts the social work knowledge base and transforms practice and policy. Researchers came up with innovative ways of continuing vital research activities and serving our partners, while also taking opportunities to document and elevate the experiences and lessons of the pandemic for students, researchers, and community members.

This Research Highlight provides a glimpse into the innovative, community-based scholarship conducted by the School's faculty, research staff, and students during the last year. Included are project spotlights, listings of publications and presentations, and an overview of our research centers. The connections between the researcher's expertise and the Grand Challenges for Social Work are also highlighted.

This work would not be possible without our many sponsors and community partners, and so we thank them for engaging in this important work with us. We hope that our scholarship provides you with new knowledge, resources, or ideas that are applicable for your own work. We would love to hear from you or collaborate with you in the future!

Sincerely,  
Michelle Mohr Carney, Ph.D.  
Dean & Professor

Amy N. Mendenhall, Ph.D  
Associate Dean for Research & Faculty Development, Professor, Director,  
Center for Community Engagement & Collaboration

## ////// TABLE OF CONTENTS

- 4 University of Kansas School of Social Welfare Vision & Mission
- 6 Mentally Ill & Behind Bars
- 8 Is Campus Sexual Assault Prevention Programming Working?
- 10 KU Researcher Transforming Kansas Foster Care System
- 12 Safely Reunifying Substance Abuse Affected Families in Foster Care System
- 13 People in Recovery May Be Better Parents
- 14 Social Welfare Research Centers
- 16 Publications & Presentations by Featured Faculty & Research Staff
- 44 Publications & Presentations by PhD Graduates, Candidates & Students
- 50 Sponsors & Community Partners
- 55 Index

# OUR VISION & MISSION

**All individuals, families, & communities utilize their power to achieve justice, equity, & well-being.**

The University of Kansas School of Social Welfare, rooted in the Strengths Perspective, aims to transform lives and social contexts and promote social, economic, and environmental justice in Kansas, the nation and the world. We do so by educating students to practice with integrity and competence; advancing the science and knowledge base of social work through scholarship and research; and participating in community-engaged service.

## GUIDING PRINCIPLES & VALUES

**Relationship Building:** We engage in relationship building that fosters creativity, collaboration, and mutual learning. Relationship building is essential across practice, scholarship, education and service. We take a strengths approach as we serve our local, state, national, and global communities.

**Diversity, Equity and Inclusion:** We embrace the inherent worth of all people. By taking the position of cultural humility and applying the lens of intersectionality, we seek to develop and promote modes of anti-oppressive social work and dismantle structures of exclusion.

**Practice with Integrity:** We demonstrate our integrity and trustworthiness as scholars, educators, practitioners, and community members by promoting social work values, ethical practice, and the process of critical reflection.

**Multisystem Competency:** We recognize that social, economic, and environmental injustices are the root causes of inequities and multiple strategies are necessary to address these. Our work integrates micro/macro social work and builds collaboration across systems and disciplines to create multi-level change.

**Critical Perspective:** We engage in deliberate and continuing examination of social conditions and solutions. We use critical inquiry to analyze and challenge existing structures and systems in order to advance the field and promote social, economic, and environmental justice.

**Empirically Informed Social Work:** We rigorously advance empirical research that impacts the social work knowledge base. By translating and applying evidence, we continually transform practice and policy across multiple systems.

42 students  
working on  
research projects

6 MSW Research  
Scholars

103 presentations  
by faculty &  
research staff

60 published books,  
chapters & journal  
articles

**YOU'LL FEEL THE LEGACY  
IN THE LANDSCAPE.**

# Mentally Ill & Behind Bars



The way people who have serious mental illness are treated by the criminal justice system can be criminal at times. Jason Matejkowski wants that to end.

“You are an offender, and you have a serious mental illness – that’s dual stigma,” explains Matejkowski, Ph.D., associate professor and associate dean for academic programs at the University of Kansas School of Social Welfare. “This has been a group of people who have been discarded by many. How they have fared in the criminal justice and mental health system, there is much room for improvement.”

That’s why Matejkowski has focused much of his career on finding a better way to care for those caught in the vortex of the criminal justice system and mental health services. He’s doing this through the power of research.

Through his career, Matejkowski has been involved in many different studies across the country that evaluate the effectiveness of current systems and test new approaches. At the heart of his research, Matejkowski has two overarching questions: How can we provide mental health treatment while also addressing the risk factors that can lead to criminal behavior? How can we do this in a way that is equitable, respects people’s autonomy, and maintains their dignity and humanity?

“I frequently jump from topic to topic because there are so many issues that need to be addressed, so many questions that need to be answered,” he shares. “It never gets boring. That excites me.”

One of the approaches he’s researching is mental health courts. He recently evaluated the effectiveness of a program in Douglas County, where KU’s Lawrence campus is located. There, people who have law enforcement contact are evaluated to see if they have a serious mental illness and whether that condition contributed to their criminal behavior. Those who meet these criteria are then given the option to be diverted to the Behavioral Health Court of Douglas County. During this supervised probationary period, participants engage in a treatment plan developed with a specialized team that includes mental health and substance use professionals.

“We conducted an evaluation, and the program showed some promise,” he shares. “Consistent with national averages, half the graduates successfully completed the program, and those who did, their criminal involvement remained low. We are doing a deep dive into the record of those who were not successful to understand why.”

Matejkowski is also intrigued by the practice of supported parole, where parole officers provide parolees who have serious mental health problems with support once they are released from prison. The services offered can include referrals to community resources that can help them transition and be successful outside of prison.

In a recent study he conducted in New Jersey, Matejkowski was surprised to discover that prisoners with mental health problems were more likely than inmates without mental health problems to forego potential early release from prison through parole.

“This may be the result of various heightened motivations, including a desire by the individuals to avoid undesirable and burdensome community supervision requirements, a belief that a decision by the parole board is unlikely to result in early release, or an expectation to fail while on parole and to return to prison,” he explains. In his report, Matejkowski outlined recommendations to make parole more accessible for all those it was designed to serve.

Another area Matejkowski is exploring is shared decision making, which encourages criminal justice authorities who work alongside people with serious mental illness to make decisions together, instead of relying on paternalistic approaches where the person in authority makes decisions unilaterally. Matejkowski says there is some evidence that shared decision-making promotes treatment engagement and boosts outcomes for people with mental illness.

“If we are keeping people out of jail, it’s important to address their needs. How we do that is the focus of our work,” Matejkowski explains. “In the mental health context, do we add programs that address criminal needs? Do we provide training to parole and probation officers about mental health needs? How do we combine these approaches to the betterment of outcomes for those being served? The answers to these questions cannot only contribute to the evidence base that should inform mental health and criminal justice policy and practice but can also have a major impact on people’s lives.”

*It’s estimated that between 14 and 16 % of adults in prison and 17 to 26% of adults in jail have serious mental illnesses. Compare that with the number of people with serious mental illness who are not incarcerated -- just 4.5 % -- and it’s immediately clear that the number of people with mental illness who are behind bars is disproportionately high.*

# Is Campus Sexual Assault Prevention Programming Working?



*Imagine you are a college student at a house party off campus. You notice a man and a woman in the corner, kissing. Soon you see them head toward the stairs that lead to the second story. The man is supporting the woman, who is having trouble walking. It looks like she is very drunk. You don't know the man's intentions, but you are suddenly concerned for her safety. What should you do?*

The 4,036 incoming University of Kansas students who completed Jayhawks Give a Flock in 2019 should now have the knowledge and skills they need to take action in a situation like this, or any other situation where they think someone is at risk for sexual assault.

But is this mandatory bystander intervention program successfully changing the attitudes and actions of students? Now, a School of Social Welfare researcher is about to find out. Thanks to a \$14,900 grant from the Kansas Department of Health and Environment, Juliana Carlson, AM, Ph.D., associate professor, will work with the KU Sexual Assault Prevention and Education Center (SAPEC) to evaluate eight sexual assault prevention programs the center offers students, faculty, and staff.

In addition, she will help create evaluation tools that will allow the SAPEC to measure change in students' attitudes over their college career as they attend subsequent sexual assault prevention programs.

This work is vitally important to Carlson, who has spent her career working to end gender-based violence. Early on, Carlson worked with survivors of domestic and sexual violence at shelters in Kansas City and Chicago. After she received her master's in social welfare at the University of Chicago, she decided to work toward preventing such abuse from occurring in the first place.

"I shifted my energy from wanting to support individuals to seeking to create community-level change. That's where I want to focus. How do we shift from the crisis-oriented work we do in the United States and in social work to more prevention work," she says.

Right now, there is increased focus on the prevalence of sexual assault on college campuses and how to prevent it, Carlson says. Researchers like her are working to identify and address the behaviors and attitudes that can lead people to become victims or perpetrators of gender-based violence, such as rape myths. Rape myths include false views about sexual assault, such as "Men rape because of uncontrollable passion" or "Women who are raped were asking for it."

Carlson has been supporting the work of SAPEC since it was founded in 2016. Now, thanks to this grant, she will be able to dedicate more time to developing and implementing evidence-based impact evaluation measures.

"It's not enough to be implementing an intervention if we are not evaluating its effectiveness. Are we seeing changes in students' attitudes and behavior?" she queries. "When you are in the mode of doing, evaluation will always take the back seat. This grant helps highlight and bring focus on the longitudinal impact of the SAPEC's prevention work."

## FOCUS ON PREVENTION

Juliana Carlson has a lot of questions, when it comes to gender-based violence. "What are the sexual gender and social norms that contribute to the perpetration of sexual violence?" she wonders. She tosses out an example, "Men are strong, and women are weak," and pokes at it. "If we make assumptions that men are strong, what is strength? Is that physically strong? Emotionally strong? How do we understand weakness? Getting at gender norms is really hard to do because norms are like the air we breathe, it is both all around us and it gets inside us."

Through her research, Carlson is working on:

- Engaging men in the primary prevention of gender-based violence.
- The transition to fatherhood as an entry point to interrupt violence.
- Policy analysis and institutional level change toward gender equity.

# KU Researcher Transforming Kansas

## Foster Care System



Years ago, Becci Akin was a foster parent for three children when she lived in another state. Although she has a BSW, MSW, and Ph.D. in social welfare, it was eye-opening for her to witness the workings of the foster care system from the inside. She saw how the system that was designed to help children can also create barriers for them, along with their parents, foster families, and even the social workers that manage the cases.

“It was a difficult situation that led me to see how the system is broken in a number of ways,” she recalls. Ever since, Akin, associate professor and Ph.D. program director at the University of Kansas School of Social Welfare, has thrown herself into transforming the foster care system for

the better. “It’s about the children and youth - they deserve families and stability in their families,” she says.

Now, Akin is working to make that a reality for children and youth in Kansas through Kansas Strong for Children and Families. This public-private-university collaborative effort is focused on improving the service array and resource development of the foster care system, keeping children in their homes whenever possible or appropriate, and striving to give children permanency and stability in their living situations.

The five-year initiative kicked off in 2018, fueled by an \$8 million grant from the Administration for Children and Families Children’s Bureau, which is part of the U.S. Department of Health and Human Services. Kansas was only one of five states to win this award.

Kansas Strong has pulled together a diverse set of collaborators to develop, implement, and evaluate strategies for enhancing both agency and court and legal practices, and reducing the barriers that result in children being ill-served by the system.

“It’s an opportunity for us to create collaboration between the child welfare system and legal system in a positive way, working together to address problems,” Akin says.

The grant couldn’t have come at a better time, Akin says, because she’s seeing growing energy and enthusiasm across the state for improving child outcomes. She’s excited to connect with this wide array of stakeholders to address and reverse Kansas’ troubling national rankings when it comes to children and youth in the foster care system.

For example, since 2011, the number of Kansas children in foster care increased by 47%, making Kansas the 13th highest state in the nation for removing children from their homes. Kansas ranks 7th worst in the nation for the time it takes for children to exit foster care and become adopted, and the state is the 5th worst in non-permanent discharges from foster care.

Kansas Strong has some innovative strategies in place to change this story in Kansas. First, it is developing an interagency advisory board to facilitate cross-system collaboration to identify needs and service gaps. It came up with a plan to give youth and parents the support and resources they need to solve problems before they result in the child being removed from the home. And it created a new adoption tracking tool to help agencies and the legal system speed children along to adoption more quickly.

They are also developing KanCoach, a coaching program that will help case management supervisors in every area of the child welfare system -- from investigators to adoption agents -- develop practices that better serve children. “Many studies say that supervision of child welfare workers predicts the outcomes that families experience,” Akin says. “We are pinpointing how we can strengthen supervision so it can support workers on the front line.”

A core value of Kansas Strong is engaging youth and parents in the planning and implementation of the program, Akin adds. In addition to having parents and youth serve on the steering committee, Kansas Strong representatives will also work with the Kansas Youth Advisory Council to get input from middle school and high school students.

“This helps us make sure the services we develop are responsive to their needs,” she explains. “Hearing directly from them about their lived experience of the child welfare system is really critical to developing effective services.”

The input the team received from stakeholders has already promoted changes in the program, Akin shares. “The number one thing they said about the service system is that we don’t have services to prevent kids from going into the system. If we could build in more prevention services, that could keep more kids out of foster care.”

# Safely Reunifying Substance Abuse Affected Families in Foster Care System



“Kids want to be with their parents,” says Jody Brook, Ph.D., MSW/LCSW. As a leading researcher in the nation focused on child welfare and parental substance use, Brook is working hard to see that children in foster care are safely reunified with their families because, she says, “Every day a child experiences family separation may mean accumulated trauma.”

Since parental substance abuse is a leading cause of children entering foster placement, Brook, an associate professor at the University of Kansas School of Social Welfare, is studying how to equip these parents with the skills they need to provide a safe environment for their children.

In 2019, Brook concluded a five-year study in Kansas that tested the effectiveness of an evidence-based intervention -- the Strengthening Families program -- at helping families reunify more quickly and more successfully. The study involved parents and their children under age 4 who were at risk of or currently experiencing out-of-home placement.

During the study, parents attended a Strengthening Families class for 14 weeks in one of six sites throughout the state. At the weekly meetings, the parents spent quality time bonding with their infant or toddler, playing, cuddling, and sharing a meal. They also learned about child development and how to provide a safe home environment for their children.

“Strengthening Families allows you to build on who your family is and rewrite your narrative. It’s very empowering,” Brook says. “It’s wonderful for the parents, and it’s usually the highlight of the week for the children. We had one little boy who would wake up at four in the morning on the day of group, get himself dressed and pull on his boots, waiting for group.”

While she is still analyzing data from the study, Brook has high hopes for this intervention. She’s already seen the powerful results of Strengthening Families in Kansas. From 2007 to 2015, she helped implement the program statewide for families with children 3 years and older.

As a result of the intervention, she says, “We know that families were reunited over 200 days faster, and that the reunifications were successful over the long term.”

Not only did families benefit, the state also saved valuable resources by returning children to their homes. “Days equal dollars for the state,” Brook explains. “What we know from our earlier study is that Strengthening Families is an extremely cost-effective program: Based on conservative estimates, for every \$1 spent, it saves \$9. So, this intervention is a win for everyone involved.”

# People in Recovery May Be Better Parents



Nancy Kepple was curious. As a parent who is in recovery, she wanted to know if the process of recovering from substance use could be helpful for parenting.

Kepple, Ph.D., MSW, and assistant professor at the University of Kansas School of Social Welfare, has spent her career studying substance use. Now, she wanted to look at the parenting experiences of Kansans who were at different stages of the recovery process to see if what they learned in recovery impacted how they parent their children.

Kepple just concluded her research, and the preliminary findings have both surprised and pleased her. “My prior research showed the parenting behaviors among parents in recovery were as good as or better than other parents, with lower frequency of child abuse and neglect,” she explains. “In this most recent study, I’m seeing that some of the same skills parents learned in recovery, like asking for help, emotional regulation, controlling impulses -- all those things that help them maintain recovery -- transfer to their parenting.”

As part of her study, Kepple surveyed 150 parents in Kansas City, Topeka, Lawrence, and surrounding rural communities who have been in recovery between three months and 14 years. She also conducted 25 in-depth interviews with a subset of the parents. Her findings are rebutting the commonly held beliefs that people who have used drugs are worse parents and that parenting is a stressor that can put people at higher risk for relapse.

Kepple is pleased that she can shed light on issues surrounding substance use in Kansas through her research. She believes it’s essential for more research to be done in the state, since Kansas faces unique challenges and opportunities not usually measured by substance use studies, which typically focus on urban areas.

“Kansas experiences things related to drugs and substance use in a different way than the national narrative, from the type of drugs to the timing of the drug use and resources available for treatment,” she says. “That’s why it’s so important to study what is going on here. The prevention-based work needs to be tailored to the realities of Kansas.”

# Social Welfare Research Centers



Center for Community  
Engagement & Collaboration

The Center for Community Engagement & Collaboration (CCEC) works collaboratively with stakeholders across systems to pursue collaborative projects & invest in organizational capacity, with the aim of promoting social, economic & environmental justice. CCEC partners with the community to transform practice and policy through evaluation, training & technical assistance.

[Center for Community Engagement & Collaboration website](#)

Email: [ccec@ku.edu](mailto:ccec@ku.edu)

Director: Amy Mendenhall

Assistant Director, Agency Capacity-Building & Community Evaluation Division Melinda Lewis

Assistant Director, Professional Education Division: Robin Nelson

Workforce Development Coordinator: Christina Boyd



The Center for Research on Aging and Disability Options (CRADO) has pioneered the strengths-based approach in work with older adults. We are leaders in applied research to improve social service practice and policy with older adults. Collaboration with older adults, community and state partners ensures that research findings result in policy change and the implementation of empirically-based interventions.

[Center for Research on Aging and Disability Options website](#)

Director: Carrie Wendel-Hummell

Project Coordinator: Lora Swartzendruber

Affiliate Faculty: Drs. Sarah Jen & Terry Koenig



The Center for LGBTQ+ Research & Advocacy debuted in summer 2021, kicking off with the 11th Annual LGBTQ Research Symposium. The goal of this center is to put Kansas on the map as a hub for research, advocacy, community engagement, education & scholarship focused on the experiences of sexually and gender diverse populations.

[Center for LGBTQ+ Research & Advocacy website](#)

Email: [lbgtqresearch@ku.edu](mailto:lbgtqresearch@ku.edu)

Leadership:

Dr. Sarah Jen

Dr. Briana McGeough

Dr. Michael Riquino

Dr. Meg Pacey



# PUBLICATIONS & PRESENTATIONS

## FEATURED FACULTY & RESEARCH STAFF



### *DEBORAH ADAMS*

Associate Professor, MSW Program Director

#### **Scholarship Focus**

Poverty and policy studies; asset building and asset effects; well-being of women and children; social and economic development; theory for research; mixed methods research.



#### **Grand Challenges**

Reduce extreme economic inequality. Stop family violence. Build financial capability and assets for all.

#### **Publication**

Adams, Deborah, CSWE Annual Program Meeting, "Promoting Diversity, Equity and Inclusion through Advancing Macro Education and Practice," Denver, CO. (November 2020).



# BECCI AKIN

Associate Professor, PhD Program Director

## Scholarship Focus

Understanding the keys to successful implementation and effective and equitable interventions for families involved in child welfare.



## Grand Challenges

Ensure healthy development for all youth. Stop family violence.

## Publications

Dunkerley, S., Akin, B. A., Brook, J., & Bruns, K. (in press). Child welfare caseworker and trainer perspectives on initial implementation of a trauma-informed practice approach. *Journal of Child & Family Studies*.

Kim, J., Brook, J., Liming, K., Park, I., Akin, B., & Franklin, C. (in press). Randomized controlled trial study of solution-focused brief therapy for substance use disorder affected parents involved in child welfare systems. *Journal of the Society for Social Work and Research*.

Wright, K., Akin, B. A., Byers, K., McCall, S., Alford, D., Parker, A., Clark, S., Shaw-Woody, N., Kline, M., Brown, N., Hill, E., Davis-Myers, S., Parham, W., & Rush, R. (in press). Using Institutional Analysis to Examine the Systemic Sources of Racial Disproportionality and Disparity: A Case Example. *Child Welfare*.

Liming, K., Brook, J., & Akin, B. A. (in press). Cumulative Adverse Childhood Experiences among Children in Foster Care and the Association with Reunification: A Survival Analysis. *Child Abuse & Neglect*.

Clark, S. L., Palmer, A. N., Akin, B. A., & Dunkerley, S. (2020). Investigating the Relationship between Trauma Symptoms and Placement Instability for Children in Foster Care. *Child Abuse & Neglect*.

Akin, B. A., Dunkerley, S., Brook, J., & Bruns, K. (in press). Driving organization and systems change toward trauma-responsive services in child welfare: Supervisor and administrator perspectives on initial implementation. *Journal of Public Child Welfare*.

## Presentations

Akin, Becci A., Kaela Byers, Stacy Dunkerley, Shelby Clark, Kelechi Wright, Vickie McArthur, and Dennis Alford, Global Implementation Conference 2021, Addressing Equity in Implementation: Building Research, Practice, and Policy Across the Globe, “Collaborative Teaming and Planning to Support the Selection of Innovations and Implementation Strategies,” Denver, CO (Virtual Conference). (May 4, 2021).

Diaz, April, Nancy Kepple, Cheryl Holmes, Linda Banda, Juliana Carlson, and Becci A. Akin, Global Implementation Conference 2021, Addressing Equity in Implementation: Building Research, Practice, and Policy Across the Globe, “Implementation Teams’ Perceptions of Collaboration with a Racial Equity Lens: Results from Diverse Stakeholders Applied to Improvement in Implementation Stages,” Denver, CO (Virtual Conference). (May 4, 2021).

Banda, Linda, Becci A. Akin, April Diaz, Juliana Carlson, Cheryl Holmes, and Nancy Kepple, Global Implementation Conference 2021, Addressing Equity in Implementation: Building Research, Practice, and Policy Across the Globe, “Iterative Development of a Fidelity Assessment to the Balance Needs of Multi-system Human Services Settings,” Denver, CO (Virtual Conference). (May 4, 2021).

Wright, Kelechi, Sarah McCall, and Becci A. Akin, Global Implementation Conference 2021, Addressing Equity in Implementation: Building Research, Practice, and Policy Across the Globe, “Pursuing Equity and Justice in Implementation: Learning from the Collective Process of Addressing Racial Disparities in Child Welfare,” Denver, CO (Virtual Conference). (May 4, 2021).

Carlson, Juliana, Becci A. Akin, Cheryl Holmes, Linda Banda, April Diaz, and Nancy Kepple, Global Implementation Conference 2021, Addressing Equity in Implementation: Building Research, Practice, and Policy Across the Globe, “Working with Implementation Teams to Promote Gender and Racial Equity: Actionable Insights from a Multi-Systems Change Demonstration Project,” Denver, CO (Virtual Conference). (May 4, 2021).

Bagwell-Gray, M., Becci A Akin, J Carlson, J Rose, S Taggart, and L Davis, National Conference on Health and Domestic Violence, “Junctions of Domestic Violence and Child Welfare: Exploring Diverse Stakeholder Perspectives,” Virtual Conference. (April 30, 2021).

Clark, Shelby, Sarah McCall, Becci A. Akin, M Gomez, and Kaela Byers, ResilienceCon 2020, “Amplified: A Poetic Inquiry of Voices in Child Welfare,” Nashville, TN (Virtual Conference). (April 11, 2021).

Clark, Shelby, Sarah McCall, Becci A. Akin, S Piepmeier, L Long, Michelle Reichart, and Kaela Byers, ResilienceCon 2020, “When Abstract Meets Concrete: Using Art to Shape Child Welfare Practice and Policy,” Nashville, TN (Virtual Conference). (April 11, 2021).

Carlson, Juliana, and Becci A. Akin, Virtual Conference of the Quality Improvement Center on Domestic Violence in Child Welfare, All of Us, Every Family, “What’s Your Data?,” (Virtual Conference). (March 5, 2021).

White Starr, R, W Mota, Juliana Carlson, and Becci A. Akin, Virtual Conference of the Quality Improvement Center on Domestic Violence in Child Welfare, All of Us, Every Family, “Advancing Equity,” (Virtual Conference). (March 3, 2021).

Diaz, A, C Holmes, N Kepple, J Carlson, and Becci A Akin, Society for Social Work and Research Annual Conference, Social Work Science for Social Change, “Assessing Perceptions of Collaboration Among Diverse Stakeholders in Implementation Teams: Preliminary Results from a Project-Developed Collaboration Survey,” Virtual Conference. (January 2021).

Clark, S, K Byers, Becci A Akin, S Dunkerley, K Wright, and S McCall, Society for Social Work and Research Annual Conference, Social Work Science for Social Change, “Child Safety and Family Preservation: Investigating the Relationships between Tenure, Type of Employment, and Values Influencing Decision Making Among Child Welfare Professionals,” Virtual Conference. (January 2021).

Banda, L, Becci A Akin, J Carlson, C Holmes, and A Diaz, Society for Social Work and Research Annual Conference, Social Work Science for Social Change, “Early Testing Mechanisms for Assessment of Initial Implementation Outcomes on Adult & Child Survivor-Centered Approach,” Virtual Conference. (January 2021).

Dunkerley, S, and Becci A Akin, Society for Social Work and Research Annual Conference, Social Work Science for Social Change, “Engaging Foster Care-Involved Parents: An Exploratory Study on Parent Engagement and Placement Stability,” Virtual Conference. (January 2021).

Byers, K, and Becci A Akin, Society for Social Work and Research Annual Conference, Social Work Science for Social Change, “Geographic Barriers to Achieving Timely Permanency: A Survival Analysis,” Virtual Conference. (January 2021).

Dunkerley, S, A Palmer, Becci A Akin, and J Brook, Society for Social Work and Research Annual Conference, Social Work Science for Social Change, “Parent and Worker Perspectives on the Helping Relationship,” Virtual Conference. (January 2021).

Wright, K, Becci A Akin, S Dunkerley, K Byers, S Clark, and S McCall, Society for Social Work and Research Annual Conference, Social Work Science for Social Change, “Parents’ and Professionals’ Perceptions of the Court and Legal System,” Virtual Conference. (January 22, 2021).

Carlson, J, Becci A Akin, N Kepple, and L Banda, Society for Social Work and Research Annual Conference, Social Work Science for Social Change, “Team Work Makes the Dream Work: Implementing Blameless Retrospective Practice in Research Teams,” Virtual Conference. (January 22, 2021).

Liming, K, Becci A Akin, and J Brook, Society for Social Work and Research Annual Conference, Social Work Science for Social Change, “The Association between Adverse Childhood Experiences, Placement Setting Type and Placement Stability for Children in out-of-Home Placement,” Virtual Conference. (January 22, 2021).

Liming, K, J Brook, and Becci A Akin, Society for Social Work and Research Annual Conference, Social Work Science for Social Change, “Influence of Cumulative Adverse Childhood Experiences on Reunification for Children in Foster Care,” Virtual Conference. (January 21, 2021).

Wright, K, Becci A Akin, S McCall, and K Weber, Society for Social Work and Research Annual Conference, Social Work Science for Social Change, "Pursuing Justice with Collaborative Institutional Research: Examining the Collective Process of Addressing Racial Disparity in Child Welfare Research," Virtual Conference. (January 21, 2021).

Akin, Becci A, Society for Social Work and Research Annual Conference, Social Work Science for Social Change, "Stable Reunification: Long-term Follow-up on a Randomized Study of a Parenting Intervention for Families of Children with Emotional and Behavioral Problems," Virtual Conference. (January 21, 2021).

Dunkerley, Stacy, Becci A. Akin, Shelby Clark, and Kelechi Wright, Council on Social Work Education 66th Annual Program Meeting, Leading Critical Conversations: Diversity, Equity, & Inclusion, (Virtual Conference), "Foster Care-Involved Parents' Views on and Legal Practices." (November 20, 2020).

Clark, Shelby L, Sarah McCall, and Becci A. Akin, Council on Social Work Education 66th Annual Program Meeting, Leading Conversations: Diversity, Equity, & Inclusion, (Virtual Conference), "Lessons Learned from Facilitating Youth Directed, Participatory Action Research in a State-Wide Study of Child Welfare Services." (November 17, 2020).

Dunkerley, Stacy, Ashley Palmer, Becci A. Akin, and Jody Brook, Council on Social Work Education 66th Annual Program Meeting, Leading Critical Conversations: Diversity, Equity, & Inclusion, (Virtual Conference), "Parent and Worker Perspectives on the Relationship in Foster Care." (November 17, 2020).

Wright, Kelechi, Kortney Carr, and Becci A. Akin, 2020 Racial Justice Symposium; Reckoning with Our History, Interrogating Our Present, Re-Imagining Our Future, Virtual Symposium, "Social Work's Racialized Foundations: Recreating a more Equitable History of the Field," University of Houston, Graduate College of Social Work. (November 13, 2020).



# MEREDITH BAGWELL-GRAY

Assistant Professor

## Scholarship Focus

Reduce health disparities for survivors of intimate partner violence (IPV); sexual safety planning intervention to address HIV/STI risk, substance use, and trauma.



## Grand Challenge

Stop family violence.

## Publications

Messing, J. T., Bagwell-Gray, M. E., Ward-Lasher, A., & Durfee, A. (2021). 'Not bullet proof': The complex choice not to seek a civil protection order for intimate partner violence. *INTERNATIONAL REVIEW OF VICTIMOLOGY*, 27(2), 173-195.

Salyer, C., Lipnicky, A., Bagwell-Gray, M., Cropsey, K., & Ramaswamy, M. (2021). Abnormal Pap Follow-Up among Criminal-Legal Involved Women in Three U.S. Cities. *International Journal of Environmental Research and Public Health*, 18(12), 6556.

Bagwell-Gray, M. E., Loerzel, E., Sacco, G. D., Messing, J., Glass, N., Sabri, B., Jock, B. W., Arscott, J., Brockie, T., & Campbell, J. (2021). From myPlan to ourCircle: Adapting a web-based safety planning intervention for Native American women exposed to intimate partner violence. *JOURNAL OF ETHNIC & CULTURAL DIVERSITY IN SOCIAL WORK*, 30(1-2), 163-180.

Thaller, J., Bagwell-Gray, M. E., Messing, J. T., & Durfee, A. (in press). Reproductive coercion and pregnancy avoidance among shelter-seeking survivors of intimate partner violence. *Violence Against Women*.

Bagwell-Gray, M. E., Jen, S., & Schuetz, N. (2020). How Intimate Partner Violence and Intersectional Identities Converge to Influence Women's Sexual Health across Environmental Contexts. *SOCIAL WORK*, 65(4), 349-357.

Messing, J., Bagwell-Gray, M., Brown, M. L., Kappas, A., & Durfee, A. (2020). Intersections of Stalking and Technology-Based Abuse: Emerging Definitions, Conceptualization, and Measurement. *JOURNAL OF FAMILY VIOLENCE*, 35(7), 693-704.

Cheng, S.-Y., Wachter, K., Kappas, A., Brown, M. L., Messing, J. T., Bagwell-Gray, M., & Jiwatram-Negron, T. (2020). Patterns of Help-seeking Strategies in Response to Intimate Partner Violence: A Latent Class Analysis. *JOURNAL OF INTERPERSONAL VIOLENCE*.

Bagwell-Gray, M. E., & Bartholmey, E. (2020). Safety and Services for Survivors of Intimate Partner Violence: A Researcher-Practitioner Dialogue on the Impact of COVID-19. *PSYCHOLOGICAL TRAUMA-THEORY RESEARCH PRACTICE AND POLICY*, 12, S205-S207.

Bagwell-Gray, M. (in press). Sexual Violence Perpetrated by Men against Women in Intimate Relationships. In *Handbook of Domestic Violence*. SAGE Publications.

## Presentations

Bagwell-Gray, Meredith E, 2020 National Conference on Health and Domestic Violence, "Trauma-informed sexual safety planning for survivors of intimate partner violence," Chicago, IL.



# MAHASWETA BANERJEE

Professor, BSW Program Director

## Scholarship Focus

Theories and practices associated with enhancing social and economic justice; community development; micro-enterprise as an anti-poverty strategy; international social development; qualitative and quantitative research.



## Grand Challenges

Reduce extreme economic inequality. Build financial capability and assets for all.

## Publications

Banerjee, Mahasweta, and Euijin Jung, Council on Social Work Education, APM 2020, “An examination of financial well-being through the lens of gender,” Virtual.

Banerjee, Mahasweta, International Consortium of Social Development, “Examining financial well-being through the lens of gender,” Indonesia.

Banerjee, Mahasweta M, The 2020 Convening on Financial Capability and Asset Building: Achievement, Challenges and Next Steps, “Financial Capability of Parents of Young Children: A Longitudinal Qualitative Study,” Washington University in St. Louis, MO. (September 24, 2020).

Banerjee, Mahasweta M, The 2020 Convening on Financial Capability and Asset Building: Achievements, Challenges and Next Steps, “Financial Socialization of Six to Eight-Year Old Children: A Longitudinal Qualitative Study,” Washington University in St. Louis, MO. (September 24, 2020).



# JARED BARTON

Assistant Research Professor

## Scholarship Focus

Child welfare management; management reporting; use of data in program improvement planning and management decision making; outcomes research; program evaluation; risk assessment; and abuse/neglect prevention with public assistance populations.



## Grand Challenges

Ensure healthy development for all youth. Harness technology for social good.

## Publications

Barton, J., Naemi, P., Biggs, J., Garstka, T. A., & Ball, T. C. (2020). Strengthening family retention and relationships in home visiting programs through early screening and assessment practices. Children and Youth Services Review, 118.

## Presentations

Barton, Jared L, and Sohaib Kiani, Good Tech Fest 2021, “Machine learning to promote child well-being: A model for improving foster care placement decisions,” Virtual. (May 19, 2021).





# JODY BROOK

Associate Professor

## Scholarship Focus

Substance abuse across the lifespan; child welfare; family drug courts; substance abuse prevention; community substance abuse strategies; mixed research methods.



## Grand Challenges

Close the health gap. Ensure healthy development for all youth. Advance long and productive lives.

## Publications

Dunkerley, S., Akin, B. A., Brook, J., & Bruns, K. (2021). Child welfare caseworker and trainer perspectives on initial implementation of a trauma-informed practice approach. *Journal of Child and Family Studies*, 30(4), 1082-1096.

Lloyd-Sieger, M., Becker, J., & Brook, J. (2021). Family treatment court participation and permanency in a rural setting: Outcomes from a rigorous quasi experiment. *Child and Family Social Work*.

Lloyd-Sieger, M., Becker, J., Nano, X., & Brook, J. (2021). Predicting substance use treatment completion and reunification among family treatment court involved parent child dyads. *Journal of Public Child Welfare*.

Liming, K., Brook, J., & Akin, B. (2021). Cumulative adverse childhood experiences among children in foster care and the association with reunification: A survival analysis. *Child Abuse and Neglect*, 113(104899).

Kim, J., Brook, J., & Akin, B. (in press). Randomized Controlled Trial Study of Solution-Focused Brief Therapy for Substance Use Disorder Affected Parents Involved in the Child Welfare System. *Journal of the Society for Social Work and Research*.

Clark, S., Palmer, A., Akin, B., Dunkerley, S., & Brook, J. (2020). Investigating the Relationship between Trauma Symptoms and Placement Instability for Children in Foster Care. *Child Abuse and Neglect*.

## Presentations

Brook, Jody, and Kiley Liming, Regional Partnership Annual Grantee Meeting, "Regional Partnership Grants, Round 3 Grantees: Lesson Learned from Impact and Evaluation," Virtual Conference Session. (May 12, 2021).

Brook, Jody, National Center on Substance Abuse and Child Welfare: Ask the Experts Series, "Data Driven Decision Making: Implementing Evidence Based Practices for Families Affected by Substance Use Disorders and Child Maltreatment," Virtual Webinar. (March 7, 2021).

Brook, Jody, Dissemination and Sustainability of Best Practices in Child Maltreatment Prevention and Early Intervention Summit, "Translating Evidence to Practice," Virtual Conference Session. (February 7, 2021).

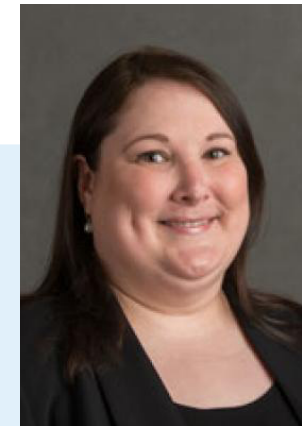
Liming, Kiley, Becci A. Akin, and Jody Brook, Society for Social Work and Research, 25th Annual Conference, "Evaluating the Impact of Cumulative Adverse Childhood Experiences on Foster Care Placement Setting and Stability," San Francisco, CA. (January 22, 2021).

Brook, Jody, Kiley Liming, Crystal Coles, Russell Cole, and Kaela Byers, Society for Social Work and Research, 25th Annual Conference, "Evaluating the Impact of a Parenting Program on Reunification for Young Children Affected by Parental Substance Use: Results from a Midwestern Randomized Control Trial," San Francisco, CA. (January 20, 2021).

Brook, Jody, University of Kansas, School of Social Welfare, "The Trauma-Stress Continuum and COVID-19: Clinical Issues and Guidance," Lawrence, KS. (January 13, 2021).

Brook, Jody, Megan Pacey, Nancy Kepple, and Sarah Jen, Council on Social Work Education, Annual Program Meeting, "Many Ways of Teaching: Outcomes Assessment across 4 Advanced Clinical MSW Courses," Denver, Colorado. (November 19, 2020).

Dunkerley, Stacy, Becci Akin, and Jody Brook, Council on Social Work Education, 66th Annual Program Meeting: Leading Critical Conversations: Diversity, Equity and Inclusion, "Parent Reports of Engagement and Challenges Early in Their Foster Care Involvement," Denver, Colorado. (November 17, 2020).



# KAELA BYERS

Associate Research Professor

## Scholarship Focus

Social determinants of health and toxic stress; promotion of protective factors; child welfare and early childhood systems improvement; implementation and outcomes evaluation.



## Grand Challenges

Ensure healthy development for all youth. Build healthy relationships to end violence.

## Publications

McCrae, J., Spain, A., Robinson, J., Byers, K., & Axelrod, J. (in press). Using a Multi-Method Developmental Evaluation Framework to Highlight Infant Primary Care Health Innovations Promoting Protective Factors: Communities, Clinics, Families. *BMC Health Services Research*.

## Presentations

Clark, Shelby, Kaela Byers, Becci A. Akin, Stacy Dunkerley, Kelechi Wright, and Sarah McCall, Society for Social Work and Research 25th Annual Conference, "Child Safety and Family Preservation: Investigating the Relationships between Tenure, Type of Employment, and Values Influencing Decision Making Among Child Welfare Professionals," San Francisco, CA. (January 2021).

Brook, Jody, Kiley Liming, Russell Cole, Crystal Coles, and Kaela Byers, Society for Social Work and Research 25th Annual Conference, "Evaluating the Impact of a Parenting Program on Reunification for Young Children Affected by Parental Substance Use: Results from a Midwestern Randomized Control Trial," San Francisco, CA. (January 2021).

Byers, Kaela, and Becci A. Akin, Society for Social Work and Research 25th Annual Conference, "Geographic Barriers to Achieving Timely Permanency: A Survival Analysis," San Francisco, CA. (January 2021).

Byers, Kaela, Emma Monahan, and Julie McCrae, Society for Social Work and Research 25th Annual Conference, “Risk and Resilience in Early Childhood: Differential Impact of Social Determinants of Health among Latent Class Family Profiles,” San Francisco, CA. (January 2021).

Mendenhall, Amy, Patricia Sattler, Kaela Byers, Whitney Grube, and Katie Schoenhoff, 44th Annual Governor’s Conference for the Prevention of Child Abuse & Neglect., “Attachment and Biobehavioral Catch-Up - An Early Childhood Initiative,” Wichita, KS. (November 2020).

Byers, Kaela, Becci A Akin, Meghan Cizek, and Allison Bowling, 44th Annual Governor’s Conference for the Prevention of Child Abuse & Neglect, “Strengthening service array and system alignment for children and families,” Wichita, KS. (November 2020).

McCrae, Julie S, PhD, Angeline K Spain, PhD, and Kaela D Byers, PhD, 2020 Annual Meeting of the Society for Prevention Research, “Addressing social determinants and toxic stress in pediatric primary care: Practitioner perspectives on practice innovations,” Washington, DC. (July 2020).



# JULIANA CARLSON

Associate Professor

## Scholarship Focus

International organizational practices to engage men in gender-based violence prevention; formal support of new and expectant fathers to reduce child exposure to domestic violence; economic and social justice for families.



## Grand Challenge

Stop family violence.

## Publications

Mabachi, N., Quiason, M., Doan, A., & CARLSON, J. (2020). Developing an Effective Campus Sexual Assault Prevention Task Force: Lessons Learned From Multiple Midwestern Universities. *Health Education & Behavior*.

Graham, L., Casey, E., & Carlson, J. (2020). Gender Matters: Infusing a Gender Analysis into The Healthy Development of All Youth Grand Challenge. *Social Work*. doi:doi: 10.1093/sw/swaa035 doi: 10.1093/sw/swaa035

Casey, E., Ihrig, A., Roman, M., Hoxmeier, J., Greer, K., & CARLSON, J. (2020). Life course and socioecological influences on gender equitable attitudes among men: A scoping review. *Trauma, Violence, & Abuse*.

## Presentations

Diaz, April, Nancy Kepple, Cheryl Holmes, Linda Banda, Juliana Carlson, and Becci Akin, Global Implementation Conference, “Implementation Teams’ Perceptions of Collaboration with a Racial Equity Lens: Results from Diverse Stakeholders Applied to Improvement in Implementation Stages,” Virtual. (May 4, 2021).

Banda, Linda, Becci Akin, April Diaz, Juliana Carlson, Cheryl Holmes, and Nancy Kepple, Global Implementation Conference, “Iterative Development of a Fidelity Assessment to the Balance Needs of Multi-system Human Services Settings,” Virtual. (May 4, 2021).

Carlson, Juliana, Becci Akin, Cheryl Holmes, Linda Banda, April Diaz, and Nancy Kepple, Global Implementation Conference, “Working with Implementation Teams to Promote Gender and Racial Equity: Actionable Insights from a Multi-Systems Change Demonstration Project,” Glasgow, Scotland. (May 4, 2021).

Bagwell-Gray, Meredith, Becci Akin, Juliana Carlson, Jennifer Rose, Shellie Taggart, and Lonna Davis, National Conference on Health and Domestic Violence, “Junctions of Domestic Violence and Child Welfare: Exploring Diverse Stakeholder Perspectives,” Virtual. (April 30, 2021).

Carlson, Juliana, and Becci Akin, Virtual Conference of the Quality Improvement Center on Domestic Violence in Child Welfare, All of Us, Every Family., “What’s Your Data?,” Virtual. (March 5, 2021).

White Starr, Ruby, Wendy Mota, Juliana Carlson, and Becci Akin, Virtual Conference of the Quality Improvement Center on Domestic Violence in Child Welfare, All of Us, Every Family, “Advancing Equity,” Virtual. (March 3, 2021).

Casey, Erin, Jill Hoxmeier, Juliana Carlson, Anna Ihreg, and Mindy Roman, Annual Conference of the Society for Social Work and Research, “Life Course Influences on the Development of Gender Equitable Attitudes Among Men: A Scoping Review,” Virtual. (January 22, 2021).

Carlson, Juliana, Becci Akin, Nancy Kepple, and Linda Banda, Annual Conference of the Society for Social Work and Research, “Team Work Makes the Dream Work: Implementing Blameless Retrospective Practice in Research Teams,” Virtual. (January 22, 2021).

Diaz, April, Cheryl Holmes, Nancy Kepple, Juliana Carlson, Becci Akin, and Linda Banda, Annual Conference of the Society for Social Work and Research, “Assessing Perceptions of Collaboration Among Diverse Stakeholders in Implementation Teams: Preliminary Results from a Project-Developed Collaboration Survey,” Virtual. (January 19, 2021).

Banda, Linda, Becci Akin, Juliana Carlson, Cheryl Holmes, and April Diaz, Annual Conference of the Society for Social Work and Research, “Early Testing Mechanisms for Assessment of Initial Implementation Outcomes on Adult & Child Survivor-Centered Approach,” Virtual. (January 19, 2021).

Lightfoot, Elizabeth, Juliana C Carlson, Annette Semanchin Jones, and Mingyang Zheng, Annual Meeting for Council for Social Work Education, “The Group Advising Model for Doctoral Mentoring: Harnessing Peer and Faculty Strengths.” (November 19, 2020).



# CHERYL HOLMES

Research Project Director

## Scholarship Focus

Frontier and rural; integrated care; behavioral health.



## Grand Challenges

Closing the health gap. Eradicating social isolation.

## Publications

Davis, S., Mendenhall, A., Levy, M., Holmes, C., Fairman, M., & Jung, E. (2020). Delivering the strengthening families program to Native American families during COVID-19: Lessons and next steps. *Greenwich Social Work Review*, 1(2 - Special Section), 141-149.

Acquavita, S.P., B., L., Levy, M., Holmes, C., Sacco, P., & Harley, D. (2020). Preparing Master of Social Work Students for Interprofessional Practice. *Journal of Evidence-Based Social Work*.

## Presentations

Diaz, April, Nancy Kepple, Cheryl Holmes, Linda Banda, Juliana Carlson, and Becci Akin, Global Implementation Conference 2021, Addressing Equity in Implementation: Building Research, Practice, and Policy Across the Globe, "Implementation Teams' Perceptions of Collaboration with a Racial Equity Lens: Results from Diverse Stakeholders Applied to Improvement in Implementation Stages," Virtual Conference. (May 2021).

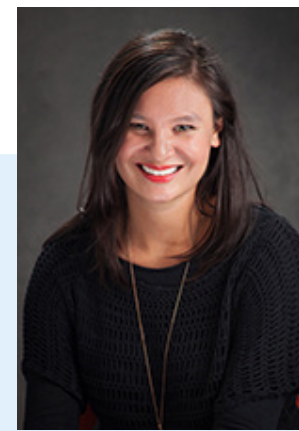
Banda, Linda, Becci Akin, April Diaz, Juliana Carlson, Cheryl Holmes, and Nancy Kepple, Global Implementation Conference 2021, Addressing Equity in Implementation: Building Research, Practice, and Policy Across the Globe, "Iterative Development of a Fidelity Assessment to the Balance Needs of Multi-system Human Services Settings," Virtual Conference. (May 2021).

Carlson, Juliana, Becci Akin, Cheryl Holmes, Linda Banda, April Diaz, and Nancy Kepple, Global Implementation Conference 2021, Addressing Equity in Implementation: Building Research, Practice, and Policy Across the Globe, "Working with Implementation Teams to Promote Gender and Racial Equity: Actionable Insights from a Multi-Systems Change Demonstration Project," Virtual Conference. (May 2021).

Holmes, Cheryl, Suzanne Gladney, Ricardo Garay, and Athena Ramos, National Center for Farmworker Health Annual Migrant Steam Forum, "Connecting with Farmworkers during COVID-19: Elevating their Voices through Research," Virtual Conference. (March 26, 2021).

Diaz, April, Cheryl Holmes, Nancy Kepple, Juliana Carlson, Becci Akin, and Linda Banda, Th 25th Annual Society for Social Work and Research Annual Conference, "Assessing Perceptions of Collaboration among Diverse Stakeholders in Implementation Teams: Preliminary Results from a Project-Developed Collaboration Survey," Virtual Conference. (January 2021).

Banda, Linda, Becci Akin, Juliana Carlson, Cheryl Holmes, and April Diaz, The 25th Annual Society for Social Work and Research Annual Conference, "Early Testing Mechanisms for Assessment of Initial Implementation Outcomes on Adult and Child Survivor Centered Approach," Virtual Conference. (January 2021).



# SARAH JEN

Assistant Professor

## Scholarship Focus

Intersections of social work, gerontology, and sexuality; support the sexual needs of aging populations and to improve the health and well-being of LGBTQ midlife and older adults.



## Grand Challenge

Achieve equal opportunity and justice. Close the health gap. Advance long and productive lives.

## Publications

Paceley, M., Cole, S., Robinson, J., Carr, K., Jen, S., Riquino, M., Mitra, S., & Wright, K. (in press). "Nobody's failing at going through a global pandemic": Lessons and tensions in social work education. *Journal of Social Work Education*.

Jen, S., Jeong, M., Kang, H., & Riquino, M. (in press). Ageism in COVID-related newspaper coverage: The first month of a pandemic. *Journals of Gerontology: Series B*.

Cole, S., Robinson, J., Mitra, S., Jen, S., Paceley, M., Riquino, M., Carr, K., & Wright, K. (in press). "Thanks for hearing me out": Voices of social work students during COVID-19. *Qualitative Social Work*.

Wiley-Sthapit, C., Jen, S., Storer, H. L., & Gonzalez-Benson, O. (2020). Discursive decisions: Signposts to guide the use of critical discourse analysis in social work. *Qualitative Social Work*.

Valenti, K., Jen, S., Parajuli, J., Arbogast, A., Jacobsen, A. L., & Kunkel, S. (2020). Experiences of palliative and end-of-life care among older LGBTQ women: A review of current literature. *Journal of Palliative Medicine*, 23(11), 1532-1539.

Fredriksen-Goldsen, K., Jen, S., Clark, T., Kim, H.-J., Jung, H., & Goldsen, J. (2020). Historical and generational forces in the Iridescent Life Course of older bisexual women, men, and gender diverse older adults. *Sexualities*.

Bagwell-Gray, M., Jen, S., & Scheutz, N. (2020). How intimate partner violence and intersectional identities influence women's sexual health across environmental contexts. *Social Work*.

Jen, S., Stewart, D., & Woody, I. (2020). Serving LGBTQ+/SGL elders during the novel corona virus (COVID-19) pandemic: Striving for justice, recognizing resilience. *Journal of Gerontological Social Work*, 63(6-7), 607-610.

Paceley, M., Goffnett, J., Sattler, P., & Jen, S. (2020). "It feels like home": Transgender youth in the Midwest and conceptualizations of community climate. *Journal of Community Psychology*, 48(6), 1863-1881.

Jen, S., Zhou, Y., & Jeong, M. (2020). "You'll see": Younger women interviewing older women in qualitative research. *Journal of Gerontological Social Work*, 63(8), 753-767.

Jen, S., & Paceley, M. (in press). Capturing queer and trans lives and identities: The promise of research poems to inform stigma research. *Stigma and Health*.

## Presentations

Storer, Heather, Odessa Benson, Claire Willey-Sthapit, and Sarah Jen, Society for Social Work and Research Annual Conference, "Critical analyses of pandemic discourses to reimagine a socially just society: Ageism, domestic violence, and migrant labor in the context of coronavirus," Virtual. (January 2021).

Willey-Sthapit, Claire, Odessa Benson, Jessica Kim, and Sarah Jen, Society for Social Work and Research Annual Conference, "Critical discourse analysis: Analyzing subjectivity across themes of race, culture, and migration," Virtual. (January 2021).

Jen, Sarah, and Rebecca Jones, Gerontological Society of America Annual Scientific Meeting, "'Courage to cobble something new': Women's queer and creative narratives of bisexuality and aging," Virtual. (November 2020).

Jeong, Mijin, Sarah Jen, Hyun Kang, and Michael Riquino, Gerontological Society of America Annual Scientific Meeting, "Ageism in COVID-related media coverage: Examining publications during the first month of the pandemic," Virtual. (November 2020).

Brook, Jody, Megan Pacey, Nancy Kepple, and Sarah Jen, Council for Social Work Education, "May ways of teaching: Outcomes assessment across four advanced clinical MSW courses," Virtual. (November 2020).



# NANCY JO KEPPLER

Associate Professor

## Scholarship Focus

Social consequences of the availability, distribution and use of psychoactive substances; substance use behaviors among parenting populations; the role of parent substance use in child welfare decision-making; and racial/ethnic disparities within the child welfare system.



## Grand Challenges

Stop family violence. Ensure healthy development for all youth. Eradicate social isolation.

## Publications

Kepple, N. J., & Parker, A. (2021). Examining unique substance-related risk profiles for neglectful behaviors among parents with and without clinical depression. *Children and Youth Services Review*.



# TERRY KOENIG

Professor

## Scholarship Focus

Ethical decision making in social work practice; social welfare philosophy; international social work development and cross-cultural practices; Central Asian and post-Soviet issues; aging, elder abuse and self-neglect; qualitative research methods.



## Grand Challenge

Achieve equal opportunity and justice.

## Publications

Koenig, T., Spano, R., & Thompson, J. (in press). Koenig, T. L., Spano, R., Thompson, J. B. (2020). Social work practice: Shining a light on powerful paradoxes and pitfalls, Book prospectus (peer reviewed). San Diego, CA: Cognella.

Koenig, T., Spano, R., & Thompson, J. (2020). Human Behavior theory for Social Work Practice.

## Presentations

Koenig, Terry, Positive Aging Conference, "Elder self-neglect," Kansas City, MO.

Koenig, Terry, Presentation, Cometa in Como, Italy, "Koenig, T. L. (2020). African refugees and their journey to northern Italy: Vocational training, Inclusion and identity in Como, Italy. Presenter, Cometa, Como, Italy.," Como, Italy. (2020).

Koenig, Terry, "Critical theory and its application to social work practice," School of Social Work at University of Wisconsin, Oshkosh, WI (2020).

Koenig, Terry, Self-determination and ethical decision making. Presenter, Disabilities Office, Lawrence, KS. (2020).





# MICHELLE LEVY

Research Project Director

## Scholarship Focus

Recruitment, retention and workforce issues; health and behavioral health; interprofessional education, integrated care; prevention; rural perspectives; engagement; organizational intervention; cross-systems collaboration.



## Grand Challenges

Ensure healthy development for all youth. Close the health gap. Achieve equal opportunity and justice.

## Publications

Robertson, A. D., Crowl, A. N., Matejkowski, J., Levy, M., Boyd, C., Barnes, J., & Shrader, S. (2021). Use of a warm handoff interprofessional simulation to model asynchronous and patient-centered teamwork. *Journal of Interprofessional Education and Practice*, 22.

Davis, S., Mendenhall, A., Levy, M., Holmes, C., Fairman, M., & Jung, E. (2020). Delivering the Strengthening Families Program to Native American families during COVID-19: Lessons & next steps. *Greenwich Social Work Review*, 1(2), 141-149.

Crowl, A., Wellner, Z., Levy, M., Boyd, C., Bates, J., Barnes, J., & Shrader, S. (2020). Determining the impact of an interprofessional simulation focused on social determinants of health with pharmacy students. *Currents in Pharmacy Teaching & Learning*, 13(7), 611-623.

Acquavita, S., Lee, B., Levy, M., Holmes, C., Sacco, P., & Harley, D. (2020). Preparing Master of Social Work students for interprofessional practice. *Journal of Evidence-based Social Work*, 17(5), 611-623.

## Presentations

Levy, Michelle M, and Maria Fairman, Multidisciplinary Advocates & Researchers Group, “Kansas Serves Native American Families (KSNAF),” University of Kansas Medical Center. (May 20, 2021).

Fairman, Maria, Michael Steddum, Laurie Ramirez, and Michelle M Levy, National Indian Child Welfare Association 39th Annual Protecting Our Children Conference, “Building tribal community connections for strengthening Indigenous families.,” virtual conference. (April 2021).

Levy, Michelle M, and Maria Fairman, Health and Humanities Arts Research Collaborative, “Kansas Serves Native American Families (KSNAF),” University of Kansas. (April 6, 2021).

Levy, Michelle M, Psychology Didactic, “Providing behavioral health care in rural communities and with rural populations.,” University of Kansas Medical Center. (September 4, 2020).



# MELINDA LEWIS

Associate Professor of Practice, Associate Director for the Center for Community Engagement & Collaboration

## Scholarship Focus

Poverty and economic inequality; asset-based financial aid; social change; strategies for effective policy advocacy by nonprofit organizations; advocacy evaluation; advocacy capacity-building for individuals and social service organizations.



## Grand Challenges

Achieve equal opportunity and justice. Reduce extreme economic inequality. Ensure healthy development for all youth. Build financial capability and assets for all.

## Publications

Lewis, M. (in press). Instructor Resources. *Social Policy for Effective Practice: A Strengths Approach: New Directions in Social Work*. Routledge.





# ALLY MABRY

Research Project Director

## Scholarship Focus

Evidence-based best practices implementation support for organizations providing services to adults and transition-age youth who experience serious mental illness; strengths model of case management; development of fidelity scales; client-centered social administrative practices for mental health organizational and state mental health authorities.



## Grand Challenges

Eradicate social isolation. End homelessness. Reduce extreme economic inequality. Achieve equal opportunity and justice.

## Publications

Mabry, Ally, and Bryan Knowles, "Virtual Open Strengths Model Workshop," California- Remote. Dates: February 22, 2021). (March 22, 2021). (April 19, 2021). (May 17, 2021). (June 21, 2021).

Mabry, Ally, and Bryan Knowles, "LA Open Strengths Model Workshop," Los Angeles, CA Remote. Dates: (February 18, 2021). (April 7, 2021). (May 12, 2021). (May 26, 2021). (June 9, 2021).

Mabry, Ally, and Bryan Knowles, "Strengths Model Workshop Turning Point Team Two," Virtual, but site in Sacramento, CA. (February 1, 2021).

Mabry, Ally, and Bryan Knowles, "Strengths Model Workshop for Community Options," Virtual but site is in North Dakota. (January 18, 2021).

Mabry, Ally, and Bryan Knowles, "Strengths Model Workshop for Turning Point," Virtual, but site in Sacramento, California. (January 11, 2021).

Mabry, Ally, and Bryan Knowles, "Virtual, Open Strengths Model Workshop." (December 7, 2020).

Mabry, Ally, Bryan Knowles, and Rick Goscha, "Open Strengths Model Workshop," (virtual). (October 19, 2020).

Mabry, Allyson A, Bryan Knowles, and Rick Goscha, "Sacramento/Telecare Strengths Model Workshop," Sacramento, CA (Virtual). (September 28, 2020).

Mabry, Ally, and Bryan Knowles, "Strengths Model Case Management Basic Workshop," Sacramento, CA (virtual). (September 21, 2020).

Mabry, Ally, Bryan Knowles, Kellie Spencer, and Rick Goscha, Sacramento, CA, "Strengths Model Workshop, (Virtual)," Sacramento, CA. (September 14, 2020).



# JASON MATEJKOWSKI

Associate Professor, Associate Dean for Academic Programs

## Scholarship Focus

Policies and services involving adults with mental illness who are involved with the criminal justice system or who are homeless.



## Grand Challenges

Promote smart decarceration. End homelessness.

## Publications

Robertson, A. D., Crowl, A. N., Matejkowski, J., Levy, M., Boyd, C., Barnes, J., & S. S. (2021). Use of a warm handoff interprofessional simulation to model asynchronous and patient-centered teamwork. *Journal of Interprofessional Education & Practice*, 22(1000410).

Matejkowski, J., & Ostermann, M. (2021). The waiving of parole consideration by people with mental illness who are incarcerated and recidivism outcomes. *Criminal Justice and Behavior*, 48(8), 1052-1071.

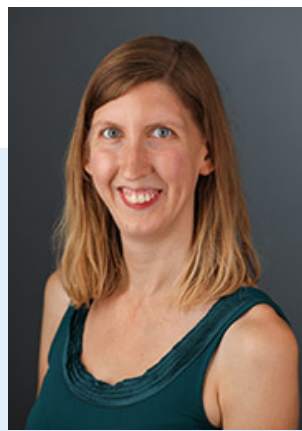
Matejkowski, J., & Severson, M. (2020). Predictors of shared decision making with people who have a serious mental illness and who are under justice supervision in the community. *International Journal of Law and Psychiatry*, 70.

Han, W., Matejkowski, J., & Lee, S. (2020). Racial variation in mental health court experiences and the associations of these experiences with recidivism. *Criminal Justice and Behavior*, 47(7), 808-828.

Severson, M., & Matejkowski, J. (2020). An early evaluation of the Douglas County Women's Substance Use Disorder Prosecutor-Led Diversion and Treatment Program. Lawrence, KS: Douglas County District Attorney's Office.

Matejkowski, J., Han, W., & Conrad, A. (2020). Voluntariness of treatment, mental health service utilization, and quality of life among mental health court participants. *Psychology, Public Policy, and Law*, 26(2), 185-197.





# BRIANA McGEOUGH

Assistant Professor

## Scholarship Focus

Understanding and intervening on mental health disparities experienced by sexual minority individuals, particularly disparities in depression and alcohol use disorders.



## Grand Challenges

Close the health gap. Ensure healthy development for all youth. Advance long and productive lives. Achieve equal opportunity and justice.

## Publications

McGeough, B. L., & Cohen, N. (in press). A Systematic Review of Depression and Anxiety Interventions for Sexual Minority Women. *Journal of Gay & Lesbian Social Services*.

McGeough, B. L., Karriker-Jaffe, K., & Zetmore, S. (2021). Rates and Predictors of Alcoholics Anonymous Attendance across Sexual Orientations. *Journal of Substance Abuse Treatment*.

McGeough, B. L., Obedin-Maliver, J., Lunn, M., Lubensky, M., & Flentje, A. (n.d.). Understanding Co-Occurring Depression Symptoms and Alcohol Use Symptoms among Cisgender Sexual Minority Women. *Journal of Gay & Lesbian Social Services*.

Zetmore, S., Gilbert, P., Pinedo, M., Tsutsumi, S., McGeough, B. L., & Dickerson, D. (in press). Do Minority Groups Really Fare as Well? Racial/ethnic Disparities in Mutual-help Group Participation for Substance Use Problems. *Alcohol Research: Current Reviews*.

McGeough, B. L. (n.d.). A Systematic Review of Substance Use Treatments for Sexual Minority Women. *Gay & Lesbian Social Services*.

McGeough, B. L. (2020). An Analysis of Statewide Anti-Bullying Laws Employing the Iowa Safe Schools Law as a Case Study. *Child and Adolescent Social Work Journal*.

McGeough, B., & Aguilera, A. (2020). Clinical interventions with sexual minority clients: Review, critique, and future directions. *Journal of Gay & Lesbian Social Services*.

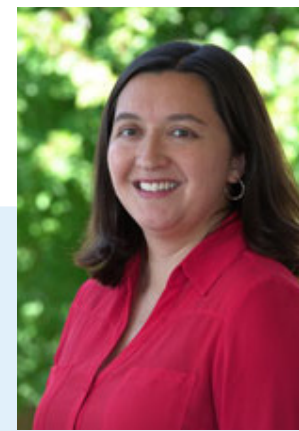
## Presentations

Cohen, Nicole, and Briana L McGeough, National LGBTQ Health Conference, "A Systematic Review of Depression and Anxiety Interventions for Sexual Minority Women." (May 21, 2021).

Boyer, Annas, Nancy Kepple, and Briana McGeough, Mental Health KC, "Beyond the Chicken and the Egg: What Mental Health Practitioners Need to know in order to Effectively Address Client Substance Use." (Spring 2021).

McGeough, Briana, Society for Social Work Research, "Emotion-Regulation Mechanisms as Risk-Factors for Depression Among Sexual Minority Women," Washington, D.C. (Spring 2021).

McGeough, Briana L, Society for Social Work Research, "Understanding Mental Health Predictors of AA Involvement for Sexual Minorities." (Spring 2021).



# AMY MENDENHALL

Professor, Associate Dean for Research & Faculty Development, Director of the Center for Community Engagement & Collaboration

## Scholarship Focus

Children's mental health including serious mental illness, service utilization, parent and child education and the impact of mental illness on children and their families.



## Grand Challenges

Achieve equal opportunity and justice. Close the health gap. Ensure health development for all youth.

## Publications

Graaf, G., Accomazzo, S., Matthews, K., Mendenhall, A., & Grube, W. (2021). Evidence Based Practice in Systems of Care for Children with Complex Mental Health Needs. *Journal of Evidence-Based Social Work*, 1-19.

Schuetz, N., & Mendenhall, A. N. (2021). Strengths Model for Youth Case Management: Impact on Provider and Agency. *Child and Adolescent Social Work Journal*, 38, 43-55.

Davis, S., Mendenhall, A., Levy, M., Holmes, C., Fairman, M., & Jung, E. (in press). Delivering the Strengthening Families Program to Native American Families During COVID-19: Lessons & Next Steps. *Greenwich Social Work Review*.

Grube, W., & Mendenhall, A. (2020). Strengths-based Group Supervision: Restoring Child and Adolescent-Centered Social Work Team Meetings. *Journal of Family Strengths*, 20(2).

Frauenholtz, S., & Mendenhall, A. N. (2020). "They'll give you a second chance": Perceptions of Youth and Caregivers Regarding Their Experiences in a Community-Based mental Health System of Care. *Child and Adolescent Social Work*.

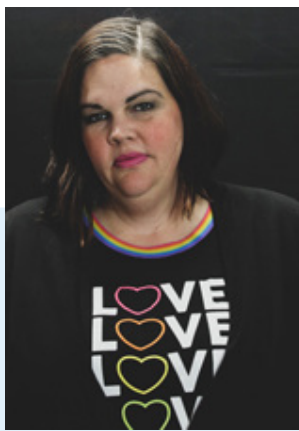
## Presentations

Grube, Whitney, Amy Mendenhall, and Euijin Jung, Society for Social Work Research 25th Annual Conference, "Strengths Model for Youth: Initial Longitudinal Analysis on Youth Outcomes," virtual. (January 2021).

Mendenhall, Amy, Community Resilience Initiative: Establishing Systems of Referral and Case Based Management for Youth, "Strengths Model Case Management for Youth," Dhaka, Bangladesh- virtual. (December 12, 2020).

Grube, Whitney, Sarah Davis, and Amy Mendenhall, Council on Social Work Education 66th Annual Program Meeting, "Variation in the Administration of Standardized Assessments: Implications for Social Work Education," virtual. (November 2020).

Weinstein, Naomi, and Amy Mendenhall, Workforce Priorities: How to Attract, Hire and Retain the Right People for Today's Behavioral Health World., "When Values Align: Human Resource Tools to Help your Organization Hire and Support Mission-Aligned Staff.," virtual. (October 15, 2020).



# MEG PACELEY

Associate Professor, Director of Toni Johnson Scholars for Racial & Social Justice

## Scholarship Focus

Understanding the impact of non-urban communities on the health and well-being of gender and sexual minority (GSM) youth; development, sustainability, and evaluation of gender and sexual minority community organizations.



## Grand Challenges

Eradicate social isolation. Achieve equal opportunity and justice. Close the health gap. Create social responses to a changing environment. Ensure healthy development for all youth. Stop family violence. Advance long and productive lives. Achieve equal opportunity & justice.

## Publications

Rand, J., & Paceley, M. S. (in press). Exploring the lived experiences of rural Minnesota LGBTQ+ youth: Navigating identity and authenticity within school and community contexts. *Journal of Gay & Lesbian Social Services*.

Paceley, M. S., Kattari, S. K., Ramseyer Winter, V., Jackson Levin, N., Banks, A., Bauerband, L., & Harper, D. M. (in press). Interdisciplinary, inclusive, and innovative: Promoting a paradigmatic shift in transgender youth cancer research. *Annals of LGBTQ Public & Population Health*.

Rand, J., Paceley, M. S., Fish, J. N., & Okrey-Anderson, S. (in press). Towards LGBTQ+ inclusion and support: A community analysis of challenges and opportunities within 4-H. *Journal of Youth Development*.

Holman, E. G., Paceley, M. S., & Courts, D. (in press). "I Share to Help Them See": A Mixed-Method Analysis of Faculty Use of Self-disclosure in Diversity Courses. *Journal of Social Work Education*.

Paceley, M. S., Cole, S., Robinson, J., Carr, K., Jen, S. R., Riquino, M. R., Mitra, S., & Wright, K. (in press). "Nobody's failing at going through a global pandemic": Lessons and tensions in social work education. *Journal of Social Work Education*.

Paceley, M. S., Greenwood, E., Dikitsas, Z. A., Fish, J. N., McInroy, L. B., Riquino, M., & Henderson, S. B. (in press). "They make these laws to put us back in our place": A found poem on the trauma, hope, and resilience of transgender and gender diverse youth and discriminatory policies. *Qualitative Inquiry*.

Jen, S. R., & Paceley, M. S. (in press). Capturing Queer and Trans Lives and Identities: The Promise of Research Poems to Inform Stigma Research. *Stigma & Health*, 6(1), 62-69.

Paceley, M. S., Okrey-Anderson, S., Fish, J. N., & McInroy, L. (2021). Beyond a shared experience: Queer and trans youth navigating COVID-19. *Qualitative Social Work*, 20(1-2), 97-104.

Cole, S., Mitra, S., Robinson, J., Jen, S. R., Paceley, M. S., Riquino, M., Carr, K., & Wright, K. (2021). "Thanks for hearing me out": Voices of social work students during COVID-19. *Qualitative Social Work*, 20(1-2), 63-66.

Withey-Rila, C., Schwartz, J. J., Alexander, L. M., & Paceley, M. S. (2020). Trans/Nonbinary Sexualities and Prioritizing Pleasure. In S. K. Kattari, M. K. Kinney, L. Kattari, & N. E. Walls, *Social Work and Health Care with Transgender and Nonbinary Individuals and Communities* (pp. 227-241). New York: Routledge.

Paceley, M. S. (2020). Youth-based gender, sexuality, and race equity work in schools. In C. Mayo, *Oxford Encyclopedia of Gender and Sexuality in Education*. New York: Oxford.

Paceley, M., Goffnett, J., Sanders, L., & Gadd-Nelson, J. (in press). "Sometimes you get married on Facebook": The use of social media among nonmetropolitan sexual and gender minority youth. *Journal of Homosexuality*.

Goffnett, J., & Paceley, M. S. (2020). Challenges, pride, and connection: A qualitative exploration of advice transgender youth have for other transgender youth. *Journal of Gay & Lesbian Social Services*, 32(3), 328-353.

Fish, J. N., McInroy, L., Paceley, M. S., Williams, N. D., Henderson, S., Levine, D., & Edsell, R. (2020). "I'm kinda stuck at home with unsupportive parents right now": Online support groups and LGBTQ youths' experiences of COVID-19. *Journal of Adolescent Health*, 67(3), 450-452.

Paceley, M. S., Sattler, P., Goffnett, J., & Jen, S. (2020). "It feels like home": Transgender youth in the Midwest and conceptualizations of community climate. *Journal of Community Psychology*, 48(6), 1863-1881.

## Presentations

Gandy, Megan, and Megan S Paceley, Conference on Social Work Education Annual Program Meeting, "Identification of strengths among Southwestern LGBTQ+ young adults," Denver, CO. (November 2020).

Brook, Jody, Megan S Paceley, Sarah R Jen, and Nancy J Kepple, Conference on Social Work Education Annual Program Meeting, "Many ways of teaching: Outcome assessment across four advanced clinical social work courses," Denver, Co. (November 2020).

Paceley, Megan S, Dominique Courts, and Elizabeth G Holman, Conference on Social Work Education Annual Program Meeting, "Teaching diversity in the current sociopolitical climate: Oppression, current events, and politics," Denver, CO. (November 2020).





# MICHAEL RIQUINO

Assistant Professor

## Scholarship Focus

Non suicidal self-injury across the lifespan, child and adolescent mental health and trauma, venturing the perspective of you with marginalized identities, integrating micro and macro approaches, mixed methods research.



## Grand Challenges

Ensure health development for all youth. Achieve equal opportunity and justice. Advance long and productive lives.

## Publications

Jen, S., Jeong, M., Hyun, K., & Riquino, M. R. (in press). Ageism in COVID-related newspaper coverage: The first month of a pandemic. *Journal of Gerontology: Social Sciences*.

Molloy, J., Keyes, T., Wahlert, H., & Riquino, M. R. (in press). An integrative review of restorative justice and social work: Untapped potential for pursuing social justice. *Journal of Social Work Education*.

Riquino, M. R., Nguyen, V. L., Reese, S. E., & Molloy, J. (in press). Utilizing a transdiagnostic perspective to disrupt White supremacist applications of the DSM. *Advances in Social Work*.

Paceley, M. S., Cole, S. J., Robinson, J. A., Carr, K. A., Jen, S., Riquino, M. R., Mitra, S. S., & Wright, K. (in press). "Nobody's failing at going through a pandemic": Lessons and tensions in social work education during COVID-19. *Journal of Social Work Education*.

Cole, S. J., Mitra, S. S., Robinson, J. A., Jen, S., Paceley, M. S., Carr, K. A., Riquino, M. R., & Wright, K. (2021). "Thanks for hearing me out": Voices of social work students during COVID-19. *Qualitative Social Work*.

Castillo, J., Hendrix, E., Nguyen, V. L., & Riquino, M. R. (2021). Macro practice supervision by social work field educators. *Journal of Social Work Education*.

K. S. S. P. P. W., & Riquino, M. (2020, December). Kansas Suicide Prevention Plan, 2021-2025. Kansas Department for Aging and Disability Services.

Reese, S. E., Riquino, M. R., Molloy, J., Nguyen, V. L., Smid, M. C., Tenort, B., & Gezinski, L. B. (2020). Experiences of nursing professionals working with women diagnosed with opioid use disorder and their newborns: Burnout and the need for support. *Advances in Neonatal Care*.

Riquino, M. R., Reese, S. E., & Garland, E. L. (2020). Assessing attentional bias toward nonsuicidal self-injury cues in young adults with histories of engaging in self-harm. *Child and Adolescent Social Work Journal*.

## Presentations

Molloy, Jen, Caroline Ross, Madison Colson, Michael R Riquino, Van L Nguyen, Sarah E Reese, and Ashley Trautman, Society for Social Work and Research Conference, "Restorative justice legislation with implications for educational settings: A landscape scan of the United States," Virtual. (January 19, 2021).

Jeong, Mijin, Sarah Jen, Hyun Kang, and Michael R Riquino, Gerontological Society of American Annual Scientific Meeting, "Ageism in COVID-related media coverage: Examining publications during the first month of the pandemic," Virtual. (November 2020).

Riquino, Michael R, University of Kansas School of Social Welfare Research Impact Talk, "Queer and trans youth perspectives in self-harm research," Virtual. (September 2020).



# EDWARD SCANLON

Associate Professor

## Scholarship Focus

Anti-poverty programs and policies; social justice; policy and social change strategies.



## Grand Challenges

Eradicate social isolation. Close the health gap. Advance long and productive lives.

## Publications

Sanders, C. K., & Scanlon, E. T. (2021). The digital divide is a human rights issue: Advancing social inclusion through social work advocacy. *Journal of Human Rights and Social Work*.



# KIM WARREN

Associate Dean of Diversity, Equity & Inclusion

## Scholarship Focus

African Diasporas, Native American studies & feminist studies



## Grand Challenges

Achieve Equal Opportunity & Justice

## Publications

Sklar, K. K., Capozzola, C., Gidlow, L., Gustafson, M., Orleck, A., Warren, K. C., & Williams, M. (2021). "The Long Progressive Era": A Roundtable on After the Vote: Feminist Politics in La Guardia's New York by Elisabeth Israels Perry. *The Journal of the Gilded Age and Progressive Era*, 2021, 1-31.

Warren, K. C. (in press). Mary McLeod Bethune's Feminism: Black Women as Citizens of the World. *Gender and History*.

Warren, K. (2020, March). The Earth Memory Compass: Diné Landscapes and Education in the Twentieth Century. *Journal of American History*.

Warren, K. (2020). Rethinking Racial, Ethnoracial, and Imperial Categories: Key Concepts in Comparative Race Studies in the History of Education. *History of Education Quarterly*, 60(4), 657-69.

## Presentations

Warren, Kim, "40 Years of Feminist Studies," Stanford University. (Spring 2021).

Warren, Kim, "History as Liberation: Diverse Perspectives on the Past and Present of Segregation," Century Foundation. (Spring 2021).

Warren, Kim, "The Big Idea: It's Time to Understand the History of Black Voting Rights," Humanities Kansas. (Spring 2021).

Warren, Kim, "The Mind and Memory of Mary McLeod Bethune," University of Oregon. (Spring 2021).

Warren, Kim, School of Social Welfare, "Respondent, Research Impact: Queer & Trans Youth Perspective in Self-Harm Research." (2020).

Warren, Kim, Western Historical Association, "Women in Western Politics," Virtual-COVID. (2020).



*PUBLICATIONS &  
PRESENTATIONS*

**PHD GRADUATES,  
CANDIDATES & STUDENTS**

# ////// *LINDA BANDA*

## **Presentations**

Banda, L. C., Akin, B., Diaz, A., Carlson, J., Holmes, C., & Kepple, N. (2021). Iterative Development of a Fidelity Assessment to the Balance Needs of Multi-system Human Services Settings. Storyboard presented at Global Implementation Conference.

Diaz, A., Kepple, N.J., Holmes, C., Banda, L. C., Carlson, J., & Akin, B.A. (2021). Implementation Teams' Perceptions of Collaboration with a Racial Equity Lens: Results from Diverse Stakeholders Applied to Improvement in Implementation Stages. Storyboard presented at Global Implementation Conference.

Carlson, J., Akin, B.A., Holmes, C., Banda L. C., Diaz, A., & Kepple N. (2021). Working with Implementation Teams to Promote Gender and Racial Equity: Actionable Insights from a Multi-Systems Change Demonstration Project. Storyboard presented at Global Implementation Conference.

Banda, L. C. & Chinkondenji, P. (2021). Philosophical Reflections on Knowledge Production from African Graduate Students in the Global North: An Exemplar of the Ubuntu Philosophy. To be presented at the Centre for Research into the Education of Marginalized Children and Young Adults (CREMCYA)

Banda, L. C., Carlson, J., Holmes, C., & Diaz, A (2021). Early Testing Mechanisms for Assessment of Initial Implementation Outcomes on Adult & Child Survivor-Centered Approach. Poster Presented at the Society for Social Work and Research virtual Conference

Carlson, J., Akin, B.A., Kepple N., & Banda L. C. (2021). Teamwork Makes the Dream Work: Implementing Blameless Retrospective Practice in Research Teams. Roundtable discussion presented at the Society for Social Work and Research virtual Conference

Diaz, A., Holmes, C., Kepple, N.J., Carlson, J., Akin, B.A., & Banda, L.C (2021). Assessing Perceptions of Collaboration Among Diverse Stakeholders in Implementation Teams: Preliminary Results from a Project-Developed Collaboration Survey. Poster Presented at the Society for Social Work and Research virtual Conference

Banda, L. C. (2021). The Perspective of Stakeholders in Ending Child Marriage: How social, cultural, and political environments shape the practice of child marriage in Malawi. Presented at the Graduate Research Workshop, University of Kansas Virtual Conference

# ////// *SHELBY CLARK*

## **Publications**

Wright, K., Akin, B.A., Byers, K., McCall, S., Alford, D., Parker, A., Clark, S.L., Shaw-Woody, N., Kline, M., Brown, N. Hill, E., Davis-Mays, S., Parham, W., Rush, R. (2021). Using Institutional Analysis to Examine the Systemic Sources of Racial Disproportionality and Disparity: A Case Example. *Child Welfare*.

## **Presentations**

Clark, S.L., Byers, K., Akin, B.A., Dunkerley, S., Wright, K. & McCall, S. (2021, January 22). Child Safety and Family Preservation: Investigating the Relationships between Tenure, Type of Employment, and Values Influencing Decision Making Among Child Welfare Professionals. Society for Social Work and Research Annual Conference, online. (Poster).

Wright, K., Akin, B.A., Dunkerley S., Byers K., Clark, S.L., & McCall, S. Parents' and Professionals' Perceptions of the Court and Legal System. Society for Social Work and Research Annual Conference, online. (Refereed).

Clark, S.L., McCall, S., Akin, B.A., Piepmeier, S., Long, L., Reichart, M., Byers, K. (2021, April 12). When Abstract Meets Concrete: Using Art to Shape Child Welfare Practice and Policy. ResilienceCon 2020, online. (Refereed).

Clark, S.L. McCall, S., Akin, B.A., Gomez, M., Byers, K. (2021, April 11). Amplified: A Poetic Inquiry of Voices in Child Welfare. ResilienceCon 2020, online. (Poster).

Clark, S.L. (2021, April 11). Developing Emotional, Relational, and Professional Resilience: Social Workers and Their Experiences of Compassion. ResilienceCon 2020, online. (Poster).

Clark, S.L. (2021, April 13). The Case for Compassion: Where Authentic Care and Resilience Meet. ResilienceCon 2020, online. (Refereed).

Akin, B.A., Byers, K., Dunkerley, S., Clark, S.L., Wright, K., McArthur, V., Alford, D. (2021, May 3). Collaborative Teaming and Planning to Support the Selection of Innovations and Implementation Strategies. Global Implementation Science Annual Conference. (Poster).

# ////// *MIJIN JEONG*

## **Presentations**

Jeong, M. (April 2021). Healthcare Access among Korean Older Immigrant Women in the Midwest. American Society on Aging. Online conference.

Jeong, M., Jen, S., Kang, H. & Riquino, M. (April 2021). Ageism in COVID-related newspaper coverage: the first month of a pandemic. American Society on Aging. Online conference.

Jeong, M., Jen, S., Kang, H. & Riquino, M. (November 4 to 7 2020). Ageism in COVID-related newspaper coverage: the first month of a pandemic. Gerontological Society of America 2020 Annual Scientific Meeting. Online conference





# ////// PATRICIA SATTLER

## Publications

Sattler, P. L. (2020). The Crime Victims' Rights Act: Rhetoric or reality? *Greenwich Social Work Review*, 1(1), 50-58

Sattler, P. L. (2020). Crimes against children. In C. Lewandowski & J. Bumgarner (Eds.), *Criminal Justice in America: The Encyclopedia of Crime, Law Enforcement, Courts, and Corrections: Vol. 1* (pp.113-115).

## Presentations

Mendenhall, A., Sattler, P. L., Byers, K., & Grube, W. (2020, November 17). Attachment and Biobehavioral Catch-up: An early childhood initiative. [Online presentation]. 44th Annual Governor's Conference for the Prevention of Child Abuse and Neglect, Wichita, KS.

Britton, H., Sattler, P., Barefoot, A. R. (2020, September). Research Approaches to Gender Based Violence. [Panelist]. University of Kansas Institute for Policy and Social Research's Research Roundtable, Lawrence, KS.

Jen, S., Pacey, M., Sattler, P., Carr, K. A., Cole, S., Mulkey, Z. E. (2020, October). Student Involvement in Research: A Panel Discussion. [Panelist]. University of Kansas School of Social Work's Research Conversations, Lawrence, KS. for Inclusion and Social Justice, Lawrence, KS.

# ////// NIK SCHUETZ

## Publications

Schuetz, N., & Mendenhall, A. N. (2021). Strengths Model for Youth Case Management: Impact on Provider and Agency. *Child and Adolescent Social Work Journal*, 38, 43-55.

# ////// KELECHI WRIGHT

## Publications

Wright, K., Akin, B. A., Byers, K., McCall, S. E., Alford, D., \*Parker, A., \*Clark, S. L., Shaw-Woody, N., Kline, M., Brown, N., Hill, E., Davis-Myers, S., Parham, W., Rush, R. (in press). Using Institutional Analysis to Examine the Systemic Sources of Racial Disproportionality and Disparity: A Case Example. *Child Welfare*.

Cole, S., Mitra, S., Robinson, J., Jen, S., Pacey, M., Carr, K., Riquino, M., & Wright, K. (2020). Thanks for Hearing Me Out: Voices of Social Work Students During COVID-19. *Qualitative Social Work*.

Pacey, M. Cole, S., Mitra, S., Robinson, J., Jen, S., Carr, K., Riquino, M., & Wright, K. Social Work Education during a Global Pandemic: Lessons Learned and Tensions Identified by BSW and MSW Students (April 2021)

Matejowski, J & Wright, K. Mental Health in Forensic Settings. Bolton, K., McLeod, D., & Natale, A. (Eds.) *Handbook of Forensic Social Work*. In preparation. (2021)

Wright, K., Carr, K., & Akin, B. (2020). The Whitewashing of Social Work History: How dismantling racism in social work education begins with a more culturally equitable history of the profession.

## Presentation

Akin, B. A., Byers, K., Dunkerley, S., Clark, S. L., Wright, K., McArthur, V., Alford, D. (2021, May 3-6). Collaborative Teaming and Planning to Support the Selection of Innovations and Implementation Strategies. *Global Implementation Conference 2021, Addressing Equity in Implementation: Building Research, Practice, and Policy Across the Globe*, Denver, Colorado (Virtual Conference) (Refereed).

Wright, K., McCall, S., Akin, B. A. (2021, May 3-6). Pursuing Equity and Justice in Implementation: Learning from the Collective Process of Addressing Racial Disparities in Child Welfare. *Global Implementation Conference 2021, Addressing Equity in Implementation: Building Research, Practice, and Policy Across the Globe*, Denver, Colorado (Virtual Conference) (Refereed).

Wright, K., Akin, B. A., McCall, S., & Weber, K. (2021, January 21). Pursuing Justice with Collaborative Institutional Research: Examining the Collective Process of Addressing Racial Disparity in Child Welfare Research. Roundtable at the 25th Annual Society for Social Work and Research Annual Conference, *Social Work Science for Social Change*. (Virtual Conference) (Refereed).

Wright, K., Akin, B. A., Dunkerley, S., Byers, K., Clark, S. & McCall, S. (2021, January 22). Parents' and Professionals' Perceptions of the Court and Legal System. 25th Annual Society for Social Work and Research Annual Conference, *Social Work Science for Social Change*. (Virtual Conference) (Refereed).

Clark, S., Byers, K., Akin, B. A., \*Dunkerley, S., Wright, K. & McCall, S. (2021, January). Child Safety and Family Preservation: Investigating the Relationships between Tenure, Type of Employment, and Values Influencing Decision Making Among Child Welfare Professionals. 25th Annual Society for Social Work and Research Annual Conference, *Social Work Science for Social Change*. (Virtual Conference) (Refereed).

Dunkerley, S., Akin, B. A., Clark, S. L. & Wright, K. (2020, November 20). Foster Care-Involved Parents' Views on Court and Legal Practices. Council on Social Work Education 66th Annual Program Meeting, *Leading Critical Conversations: Diversity, Equity, & Inclusion*, (Virtual Conference) (Refereed).

Wright, K., Carr, K., & Akin, B. A. (2020, November 13). Social Work's Racialized Foundations: Recreating a more Equitable History of the Field. 2020 Racial Justice Symposium; Reckoning with Our History, Interrogating Our Present, Re-Imagining Our Future, Virtual Symposium, University of Houston, Graduate College of Social Work. (Refereed).

# THANKS TO OUR SPONSORS & COMMUNITY PARTNERS

The University of Kansas School of Social Welfare would like to thank the many sponsors and community partners who made our work in the 2020-2021 fiscal year possible. Together with these partners, we have engaged in transformative social work research which has positively impacted individuals, organizations and communities in Kansas and beyond.

## //// SPONSORS

U.S Department of Health & Human Services, Administration for Children & Families  
U.S Department of Health & Human Services, Health Resources and Services Administration  
U.S Department of Health & Human Services  
Oklahoma Department of Mental Health and Substance Abuse Services  
Patient-Centered Outcomes Research Institute  
U.S. Children's Bureau  
TFI Family Services  
Kansas Department of Aging & Disability Services  
Kansas Department of Children & Families  
Saint Francis Ministries  
United Methodist Health Ministry Fund  
Children's Trust Fund of Missouri  
American Cancer Society  
KVC Kansas  
Colorado Department of Human Services  
Connecticut Department of Children and Families  
Iowa Department of Human Services  
Maine Department of Health and Human Services  
Montana Department of Public Health and Human Services  
New Hampshire Department of Health and Human Services  
New Mexico Children, Youth and Families Department  
Ohio Department of Job and Family Services  
Oregon Department of Human Services

# ////// *COMMUNITY PARTNERS*

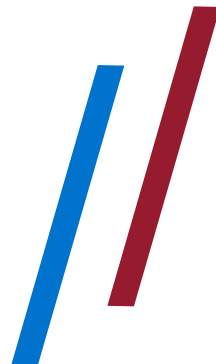
## A Safe Place

Administration for Children and Families, Region 7  
Aetna  
Allegheny County Dept of Children, Youth & Families  
Caminar Latino  
Center for Children and Family Futures  
Center for States  
Center for the Study of Social Policy  
Chapin Hall  
Children's Alliance of Kansas  
Children's Bureau  
Children's Mercy  
Community Care Network of Kansas  
Community Health Center of Southeast Kansas  
Cornerstones of Care  
Cottonwood Community Developmental Disability Organization  
Court Improvement Program  
Cowley County CDDO  
Crosswinds Counseling and Wellness  
DCCCA  
Disability Planning Organization of Kansas, inc  
East Central Kansas CDDO  
Farmworker Justice  
Flint Hills Community Health Center  
Foster Adopt Connect  
Futures Without Violence  
Haskell Indian Nations University  
Health Partnership Clinic  
HealthCore  
ICF International, Inc.  
Illinois Department of Family and Children Services  
Iowa Tribe of Kansas and Nebraska  
James Bell Associates  
Jeanne Geiger Crisis Center  
Jo Co Area Agency on Aging

Jo Co CDDO  
Joplin Avalon Hospice  
JUNTOS Center for Advancing Latino Health  
Kansas Association of AAA/ADRC  
Kansas City Indian Center  
Kansas Council on Developmental Disabilities  
Kansas Department for Children and Families  
Kansas Department of Aging & Disability Services  
Kansas Department of Health and Environment  
Kansas Family Advisory Network  
Kansas Healthcare Associate  
Kansas Recruitment and Retention Center  
Kansas Supreme Court Task Force on Permanency Planning  
Kelly Center  
Kickapoo Tribe in Kansas  
KU School of Pharmacy  
KVC Kansas  
KVC Residential Hospital  
Lawrence Memorial Hospital  
Leading Age Kansas  
LiveWell Northwest Kansas  
Massachusetts Department of Family Services  
Mathematica  
MHP Salud  
Migrant Clinicians Network  
Migrant Farmworkers Assistance Fund  
Minds Matter, inc  
Mirror  
Missouri Migrant Education Program/Research Foundation at SUNY  
Mothers Place  
National Center for Farmworker Health  
National Council of Juvenile and Family Court Judges  
Native American Student Services  
Olathe Medical Center  
Osawatomie State Hospital  
Ozark Center  
Prairie Band Potawatomi Nation  
Rainbows  
REACH Healthcare Foundation



Remedies  
 Resource Center for Independent Living, Inc  
 RESPOND, Inc.  
 Russell Child Development Center  
 Sac and Fox Nation  
 Safe Generations  
 Saint Francis Ministries  
 Saint Luke's Primary Care  
 Salina Family Health Care  
 Samuel U. Rodgers Health Clinic  
 Satori Counseling Services  
 Southeast Kansas AAA  
 Sedgwick Co CDDO  
 Southwest Developmental Services, Inc  
 St. Joseph School District  
 State of Kansas Department of Aging and Disability Services  
 State of Kansas Department of Children and Families  
 State of Missouri Department of Social Services  
 State of Oklahoma, Department of Human Services  
 State of Oklahoma, Department of Mental Health and Substance Abuse Services  
 Sunflower Foundation  
 Supportive Care  
 TFI  
 Tri-County Interlocal #607  
 United Healthcare  
 United Methodist Health Ministry Fund  
 University of Kansas Center for Migration Research  
 University of Kansas Center for Study of Injustice  
 University of Kansas Health System  
 University of Kansas Medical Center  
 University of Nebraska Medical Center  
 University of Oklahoma, Health Science Center  
 University of Texas Dell Medical School – Department of Population Health  
 Vibrant Health  
 Visiting Nurses Association  
 Wichita LGBT Health Network  
 Wichita State University  
 Women's Center & Shelter of Greater Pittsburgh  
 Wyandotte-Leavenworth County AAA/ADRC  
 YouthLink of Centerlink (Q Chat Space)  
 YWCA Northeastern Massachusetts



# INDEX

## Complete list of faculty

Deborah Adams (pg. 17)  
 Scholarship focus: Poverty and policy studies; asset building and asset effects; well-being of women and children; social and economic development; theory for research; mixed methods research.

Becci Akin (pg. 18)  
 Scholarship focus: understanding the keys to successful implementation and effective and equitable interventions for families involved in child welfare.

Meredith Bagwell-Gray (pg. 21)  
 Scholarship focus: Reduce health disparities for survivors of intimate partner violence (IPV); sexual safety planning intervention to address HIV/STI risk, substance use, and trauma.

Mahasweta Banerjee (pg. 22)  
 Scholarship focus: Theories and practices associated with enhancing social and economic justice; community development; micro-enterprise as an anti-poverty strategy; international social development; qualitative and quantitative research.

Jared Barton (pg. 23)  
 Scholarship focus: Child welfare management; management reporting; use of data in program improvement planning and management decision making; outcomes research; program evaluation; risk assessment; and abuse/neglect prevention with public assistance populations.

Jody Brook (pg. 24)  
 Scholarship focus: Substance abuse across the lifespan, child welfare, family drug courts, substance abuse prevention, community substance abuse strategies, mixed research methods.

Kaela Byers (pg. 25)  
 Scholarship focus: Social determinants of health and toxic stress; promotion of protective factors; child welfare and early childhood systems improvement; implementation and outcomes evaluation.

Michelle Mohr Carney  
 Scholarship focus: Intimate partner violence, at-risk youth, community practice, nonprofit development and management, program development and evaluation, leadership development, collaboration building and conflict resolution, grant writing, strategic planning.

Juliana Carlson (pg. 26)  
 Scholarship focus: International organizational practices to engage men in gender-based violence prevention; formal support of new and expectant fathers to reduce child exposure to domestic violence; economic and social justice for families.

Sarah Jen (pg. 29)  
 Scholarship focus: Intersections of social work, gerontology, and sexuality; support the sexual needs of aging populations and to improve the health and well-being of LGBTQ midlife and older adults.

Nancy Jo Kepple (pg. 30)  
 Scholarship focus: Social consequences of the availability, distribution, and use of psychoactive substances; substance use behaviors among parenting.

Terry Koenig (pg. 31)  
 Scholarship focus: Ethical decision making in social work practice; social welfare philosophy; International social work development and cross-cultural practices; Central Asian and post-Soviet issues; aging, elder abuse and self-neglect; qualitative research methods.

Melinda Lewis (pg. 33)  
 Scholarship focus: Poverty and economic inequality, asset-based financial aid, social change, strategies for effective policy advocacy by nonprofit organizations, advocacy evaluation, and advocacy capacity-building for individuals and social service organizations.



Jason Matejkowski (pg. 35)

Scholarship focus: Policies and services involving adults with mental illness who are involved with the criminal justice system or who are homeless.

Briana McGeough (pg. 36)

Scholarship Focus: Understanding and intervening on mental health disparities experienced by sexual minority individuals, particularly disparities in depression and alcohol use disorders.

Amy Mendenhall (pg. 37)

Scholarship focus: Children's mental health including serious mental illness, service utilization, parent and child education and the impact of mental illness on children and their families.

Meg Paceley (pg. 38)

Scholarship focus: Understanding the impact of non-urban communities on the health and well-being of gender and sexual minority (GSM youth; development, sustainability, and evaluation of gender and sexual minority community organizations.

Laurie Ramirez

Scholarship focus: Indigenous and Latinx issues; cultural competency; social justice; substance abuse prevention and treatment; community organizing.

Michael Riquino (pg. 40)

Scholarship Focus: Non suicidal self-injury across the lifespan, child and adolescent mental health and trauma, centering the perspective of youth with marginalized identities, integrating micro and macro approaches, mixed methods research.

Edward Scanlon (pg. 41)

Scholarship focus: Anti-poverty programs and policies; social justice; policy and social change strategies.

Kim Warren (pg. 43)

Scholarship Focus: Children and families, Latino immigrant families, rural youth, school, health, psychodrama techniques.

## Complete list of research staff

Dennis Alford

Scholarship focus: Strengthening child welfare systems; improving safety, permanency and well-being outcomes for children and families

Taryn Anquoe

Scholarship Focus: Child welfare services; implementation of evidence-based practices, secondary traumatic stress, supervision and coaching practices

Amanda Brown

Scholarship Focus: Parenting education, parenting beliefs and practices across cultural contexts, play, early childhood development and school readiness

Elise Crain

Scholarship focus: Child welfare services; implementation of evidence-based practices, secondary traumatic stress, supervision and coaching practices

Sharah Davis

Scholarship focus: Promote evidenced-based and community-based practices to improve family well-being with at-risk families; utilize research findings to guide community-based interventions for at-risk families

Mary Eibes

Scholarship Focus: Child welfare services; implementation of evidence-based practices, secondary traumatic stress, supervision and coaching practices.

Maria Fairman

Scholarship focus: Indigenous and Tribal issues; Cultural Competence; Understanding how cultural adaptation promote evidence-based practices to improve the well-being of families with children who are affected by substance abuse; Initiate and preserve partnership and collaboration with organizations that serve families with children

Whitney Grube

Scholarship focus: Child and adolescent community mental health services, Medicaid Waivers and mental health policy, Youth with Serious Emotional Disturbance, Child and adolescent well-being, Impact of mental illness on children and their families

Alanea Hanna

Scholarship Focus: Child welfare services; implementation of evidence-based practices, secondary traumatic stress, supervision and coaching practices

Catrina Hinkle

Scholarship Focus: Child welfare services; implementation of evidence-based practices, secondary traumatic stress, supervision and coaching practices

Cheryl Holmes (pg. 28)

Scholarship focus: Frontier and Rural; Integrated Care; Behavioral Health

Bryan Knowles

Scholarship focus: Evidence-based best practices implementation support for organizations providing services to adults and transition-age youth who experience serious mental illness

Michelle Levy (pg. 32)

Scholarship focus: Recruitment, retention and workforce issues; health and behavioral health; interprofessional education, integrated care; prevention; rural perspectives; engagement; organizational intervention; cross-systems collaboration

Kiley Liming

Scholarship Focus: Adverse Childhood Experiences (ACEs); Foster Care; Child Welfare Program Evaluation & Design

Ally Mabry (pg. 34)

Scholarship focus: Evidence-based best practices implementation support for organizations providing services to adults and transition-age youth who experience serious mental illness;

Victoria McArthur

Scholarship focus: Child welfare services; implementation of evidence-based practices, secondary traumatic stress, supervision & coaching practices

Sarah McCall

Scholarship focus: child welfare services and collaboration

Pegah Naemi Jimenez

Scholarship Focus: Strengthening permanency and parenting outcomes for children and families with a focus in anti-racism approaches and systems change in the child welfare system

Natasha Santiago-Mason

Scholarship Focus: Child welfare services; implementation of evidence-based practices, secondary traumatic stress, supervision & coaching practices

Chad Shaver

Scholarship focus: Child welfare management, use of data in program improvement planning and management

Jon Sushinsky

Scholarship focus: Child welfare management, use of data in program improvement planning and management

Lora Swartzendruber

Scholarship focus: Aging and disability options

Julie Toplikar  
Scholarship focus: Strengthening child welfare prevention services; system alignment

Priya Vanchy  
Scholarship Focus: Racial disparity and disproportionality in the child welfare system, facilitating community & systems change as a mechanism for prevention, child & family well-being

Carrie Wendel-Hummell  
Scholarship areas: Healthcare and Long Terms Services and Supports Policy, Mental Health over the Life-course, Aging with Disabilities, Mixed Methods Research, Community-based Research

Abby Young  
Scholarship Focus: Child and adolescent well-being

### **Complete list of PhD graduates, candidates and students**

- Linda Banda (pg. 46)
- Shelby Clark (pg. 47)
- Mijin Jeong (pg. 47)
- Patricia Sattler (pg. 48)
- Nik Schuetz (pg. 48)
- Kelechi Wright (pg. 49)



Social Welfare Research Office website  
kusswro@ku.edu

Amy Mendenhall  
Associate Dean for Research  
amendenhall@ku.edu  
785-864-4792



# KU SCHOOL OF SOCIAL WELFARE

The University of Kansas

## SCHOOL OF SOCIAL WELFARE

University of Kansas

1545 Lilac Lane

Lawrence, KS 66045-3129

Phone: (785) 864-4720

Fax: (785) 864-5277

School of Social Welfare website

The University of Kansas is an equal opportunity/  
affirmative action institution.

Follow us at:

