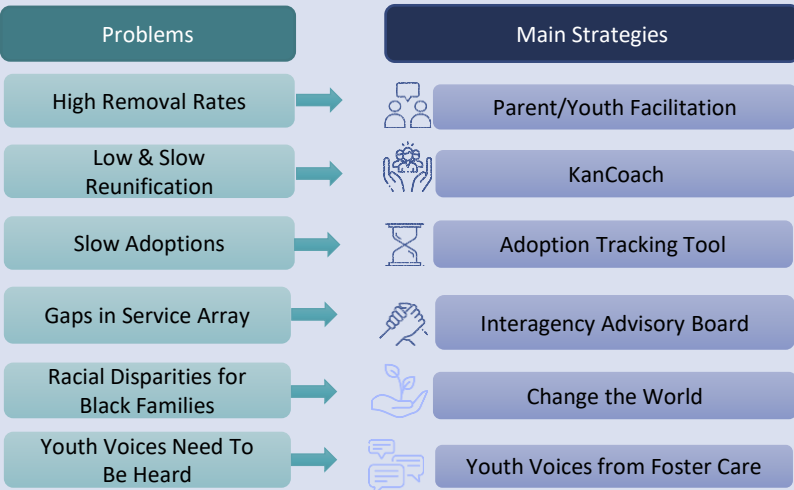


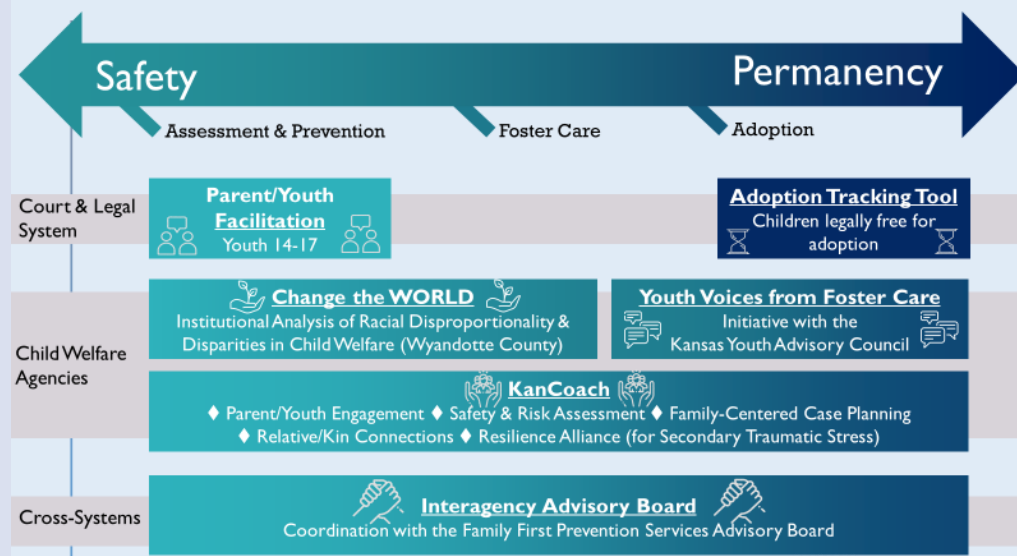
Collaborative Teaming and Planning to Support Selection of Innovations and Implementation Strategies

BACKGROUND, PROCESSES & METHODS

Kansas Strong for Children and Families Steering Committee collaborated across service systems to identify priority problem areas in child welfare. The team examined multiple quantitative and qualitative data sources (e.g., state and federal administrative data, case reviews, stakeholder interviews, agency/stakeholder survey, parent survey, and input gathered from community events). Data were shared with a steering committee to identify root causes, target populations, and key priorities for intervention for the six problem areas to inform Kansas Strong initiative development.

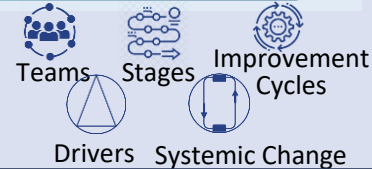


Selected strategies aim to **improve outcomes** by supporting the **full continuum of child welfare services** and changing practices in **both court/legal and agency settings**, and to address systemic barriers



IMPLEMENTATION STRATEGIES

Selection of implementation strategies was conducted in collaborative teams for each strategy and informed by assessing readiness and capacity and using Active Implementation Frameworks (Fixsen, Blase, Van Dyke, 2019)



CHALLENGES

- Competing priorities across systems (e.g., courts versus child welfare agencies)
- Meaningful and sustained integration of child & family voice
- Time demands necessary to authentically engage and generate consensus across stakeholders
- Making time and space for brave conversations on racism

SUCCESSES

- Data used to build shared understandings and shared language
- Multiple types of data deepened stakeholder knowledge
- Developing new relationships, which required time to build trust
- Different systems focus on distinct goals and processes; centering family and youth lived experiences can bridge these differences
- Implications: Necessary are routine and ongoing cross-system meetings, supported by informal and formal mechanisms

Our process



KEY DISCUSSION QUESTION

What is the role of collaboration in teaming and planning for intervention and implementation strategy selection?